

Windowmaker Software Options



Link to RoofWright

Import conservatory designs direct from RoofWright

Overview

The Link to RoofWright Option allows the Windowmaker user to import directly from RoofWright, thereby reducing re-processing time and eliminating errors

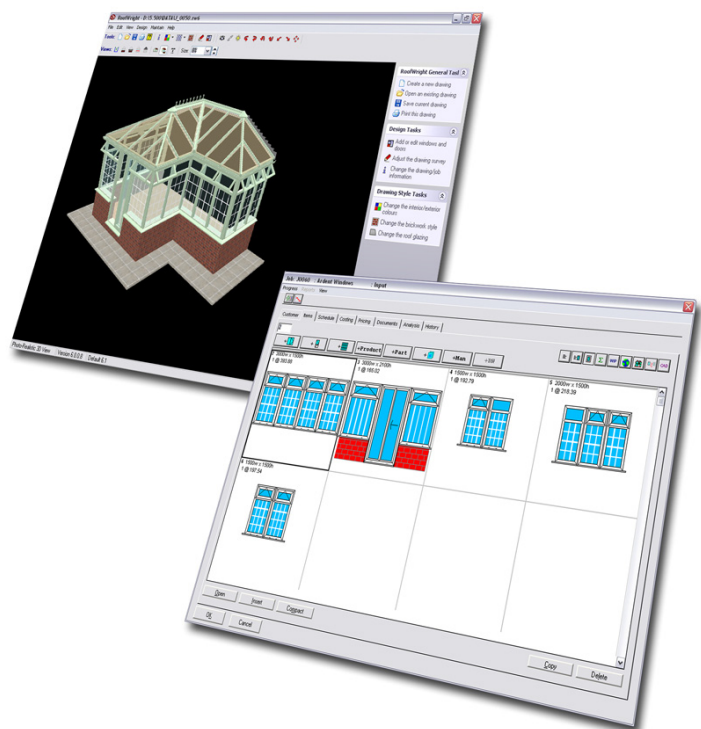
How it works

The user can launch the RoofWright application from within Windowmaker, or run as a standalone application.

Once a design has been created, the RoofWright template files can then be imported back into Windowmaker as individual items.

Key Features

- ▷ RoofWright is the leading software for conservatory design, and the link ensures that complex designs can still be imported and processed through Windowmaker
- ▷ By importing from RoofWright files, re-processing of data is eliminated and errors are avoided
- ▷ The import process allows precise mapping of all RoofWright details (including colours, finishes, etc..)
- ▷ Each facet will be saved as an individual door and window, and appropriate an system selected
- ▷ Glazing and Options details can be amended, where necessary, using Global Changes while overall specifications can be changed
- ▷ Any errors or queried items are detailed as part of the import process, ensuring the specification is maintained



RoofWright

The software for conservatories

Minimum Requirements:

- Hardware: Standard Windowmaker Specification
- Software: Windowmaker Express, SQL or ERP
Job Import option
RoofWright Express, Bronze or Silver