

Windowmaker Option Bar Optimisation I



Overview

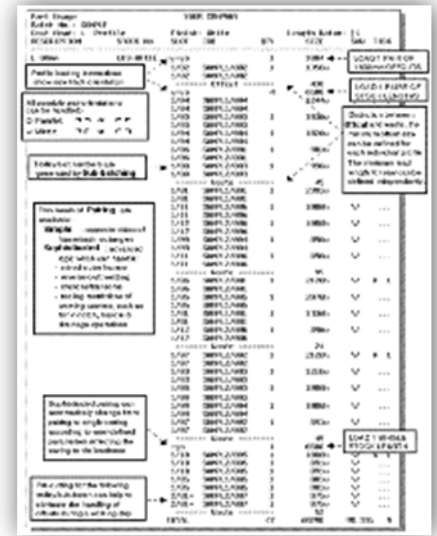
Bar Optimisation reduces production wastage of profile stock through automatically organising the cutting sequence of profile pieces within a job, batch or sub-batch.

How it works

The [Bar Optimisation](#) option reduces waste by efficiently scheduling and organising cutting sequences within a batch. In addition to reducing costs by minimising waste, operator time is reduced (with increased automation) and throughput is increased by minimising saw head movements.

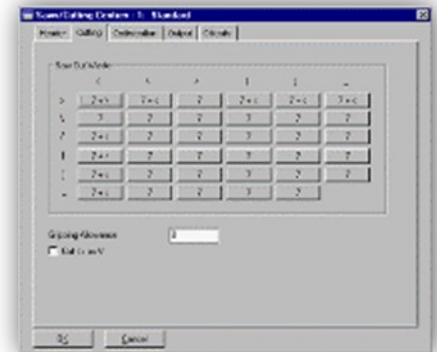
When used, Windowmaker produces accurate production estimates for actual wastage after optimisation, by drawing data from the Optimised [Costing/Pricing](#) Option.

The functionality can be further increased when combined with the [Sub batching](#), [Profile Pairing I](#), [Profile Pairing II](#), and [Re-usable Offcut](#) options.



Key Features

- ▲ Bar Sequence choices include: Prioritise butt-welded Pieces and Lowest Slot Numbers, Longest to Shortest, Longest to Shortest used Length
- ▲ Priority Sequence choices include: Shortest to Longest, Longest to Shortest, Alternately
- ▲ The stock length of each individual profile can be defined to enable you to use different stock sizes of bars
- ▲ The program allows you to specify a track specific operation. The optimisation logic will automatically determine the track for the profile based on track specific operation used on the profile part
- ▲ You can produce optimised cutting lists or labels in optimised sequence
- ▲ The program allows for variation in the saw cut widths according to the circumstances
- ▲ You can avoid generation of short length offcuts that are difficult to re-use by defining for each profile: Minimum Re-usable or Maximum Wastage



Linked Options

- ▲ [Bar Optimisation II](#) offers more advanced features

Minimum Requirements:

- ▲ **Hardware:** Standard Windowmaker Specification. For more details click [here](#).
- ▲ **Software:** Windowmaker Lite, Advanced, Express, SQL or ERP
- ▲ Windowmaker profile and saw data must be correctly setup.