

Windowmaker Option Installation Scheduling

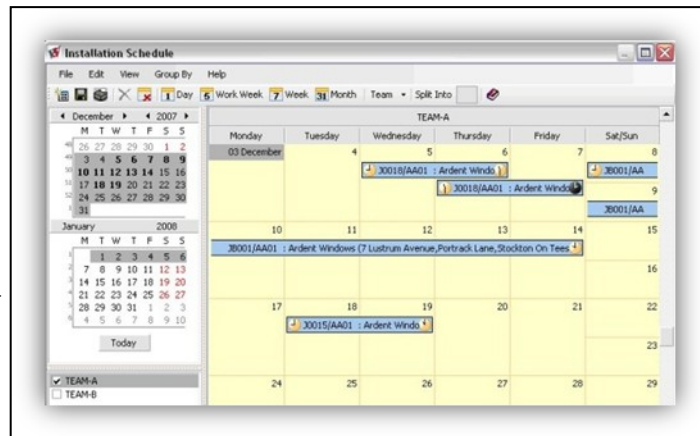


Overview

Installation Scheduling allows you to plan the installation of a job with a defined schedule, so that jobs can be allocated to empty slots in the available installation teams.

Features

- ▲ Using the Installation Schedule option you can:
 - ▲ Create your installation timetable, with an easy to use screen to manage all jobs
 - ▲ Create multiple 'Installer' type users and assign them to different installation teams
 - ▲ Schedule the Production, Delivery and Installation of a job based on the timescale required by the customer
 - ▲ Schedule a job to an empty slot
 - ▲ Modify the installation schedules of jobs
 - ▲ Drag and drop appointments to available empty slots for the same team or another team
 - ▲ Split a single appointment into multiple discontinuous appointments



Job	Account	Name	C...	Dr...	Status	Comment
J0001	AA01	Ardent Windows		52.25	Input	Imported from RW/3FV
J0002	AA01	Ardent Windows		61.75	Input	Imported from RW/Bay
J0003	AA01	Ardent Windows		95	Input	Imported from RW/Dou
J0004	AA01	Ardent Windows		1240.51	Input	Imported from RW/Lea
J0005	AA01	Ardent Windows		1163.75	Input	Job to Demo Purchase
J0006	AA01	Ardent Windows		1163.75	Input	Job to Demo Purchase
J0007	AA01	Ardent Windows		579.5	Input	Job to Demo Purchase
J0018	AA01	Ardent Windows		590.44	Input	
JB001	AA01	Ardent Windows		1648.25	Input	
Q0001	AA01	Ardent Windows		599022..	Acknow'fd	Job to Demo Master Jo
Q000101	AA01	Ardent Windows		130521..	Input	Phase 01 of the Master
Q000102	AA01	Ardent Windows		72568.6	Input	Phase 02 of the Master
Q000103	AA01	Ardent Windows		35454	Input	Phase 03 of the Master
Q000104	AA01	Ardent Windows		117909..	Input	Phase 04 of the Master
Q000105	AA01	Ardent Windows		53922	Input	Phase 05 of the Master
Q000106	AA01	Ardent Windows		30533	Input	Phase 06 of the Master
SCH10	AB07	A Belling Good D..		1213.7	Input	Job to Demo Multi Loc.
SCH11	D002	Dolphin Windows		106502.	Input	Job Sch. to demo View
SCH12	AA01	Ardent Windows		5795	Input	

Job: J0018 : Ardent Windows : Input

Progress Reports View

Customer Items Schedule Pricing Documents Analysis

Unschedule Required by Customer 28/12/2007

Installation Dates 05/12/2007 07/12/2007 0117

Time 2 5 Required at Depot 05/12/2007 010

Materials Required

Delivery Capacity Req. 1000 Route 170 04/12/2007 1/Tuesday route 210

Drop 0

Production 1/PB05 30/11/2007 012

Materials Required 23/11/2007

Purchase Latest Order Date 25/11/2007 280

Survey Surveyor

Related Options

- ▲ You need [Windowmaker Express](#) or higher
- ▲ Training, Support and Consultancy: Significant