

Windowmaker Option

Setting - up Panels



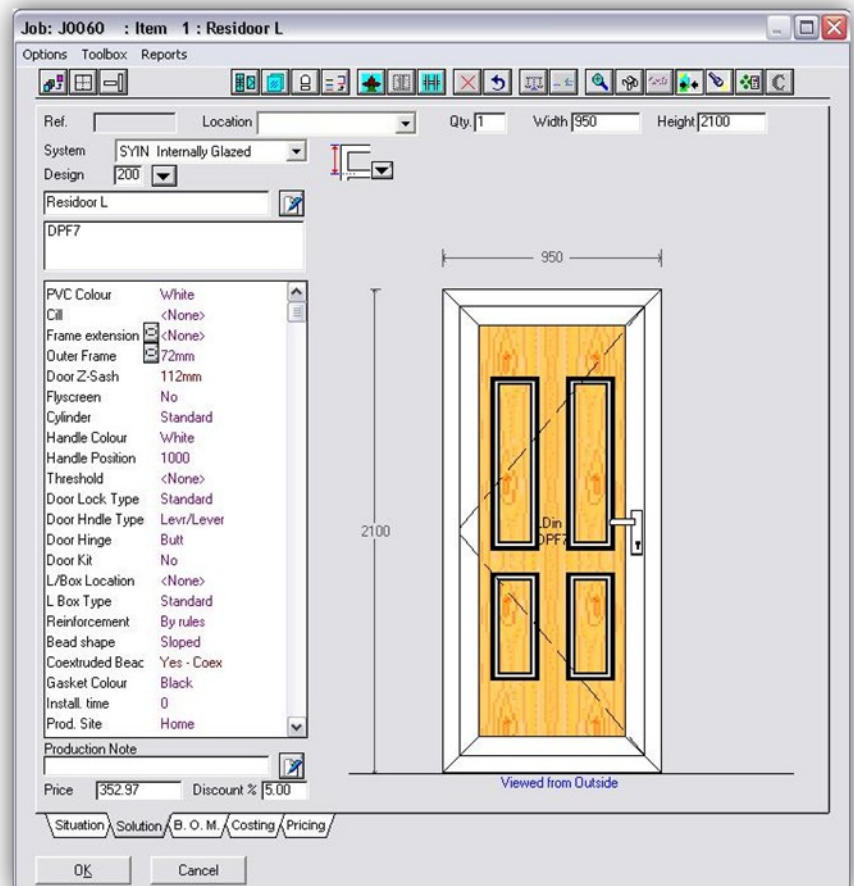
Overview

For setting up the Panels feature, Windowmaker can be configured to directly access the electronic catalogue provided by the Panel supplier.

The database can be edited and updated directly, without affecting Windowmaker data setup

Key Features & Benefits

- ▲ You can setup various details of Panels along with graphics for each supplier:
 - △ Family
 - △ Type
 - △ Handing
 - △ Thickness
 - △ List Price
 - △ Size
 - △ Weight
- ▲ Panel graphics can be imported as image files
- ▲ Panel dimensions can be input in either metric or imperial units
- ▲ The program supports various types of Panels:
 - △ Door panel (full)
 - △ Door panel (half - below mid-rail)
 - △ Side-panel (full)
 - △ Side-panel (half - below mid-rail)
- ▲ The program allows only valid size and type of Panels to be applied to the panes



Please [contact us](#) for details on the types of database format that can be used for the catalogue.