

Windowmaker **How To....** Install / Upgrade to Windowmaker Lite 5.7



Introduction

Please read the document before performing any of the steps. If you already have a version of Windowmaker Lite installed, **you must take a complete back up of your data and database** before progressing with the installation of a new version of Windowmaker Lite.

The Installation Program will guide you through all the steps below, however these additional notes are designed to help answer any additional questions.

Please contact your Windowmaker supplier if you want help with the backup. You can also visit www.windowmaker.com/eng/backup.aspx

PLEASE NOTE:

It is important to read this entire document, including Frequently Asked Questions, before you start installing Windowmaker Lite 5.7. This new version contains several pre-requisites, so it is important to ensure your system is ready for the upgrade. In particular, please ensure:

- ▷ Your hardware and software meets the minimum requirements.
- ▷ You have performed a backup.
- ▷ You have requested & received your new license file from Windowmaker (if you have additional paid-for options)

Minimum Requirements

Windowmaker Lite				
	Workstation		Server	
Processor	Minimum: 600 MHz processor	Recommended: 1 GHz processor or more	Minimum: 600 MHz processor	Recommended: 1 GHz processor or more
Operating System	Windows 2000 with SP3 Windows XP with SP2		Windows XP Professional with SP2 Windows Server 2000 Windows Server 2003 with SP1	
Memory	Minimum: 256 MB RAM	Recommended: 512 MB RAM or more	Minimum: 512 MB RAM	Recommended: 1 GB RAM or more
Hard Disk Space	200MB for installation		Required space varies with number of Jobs Minimum: 10 GB, Recommended: 20 GB or more	
Display	Minimum: 800x600	Recommended: 1024 x 768 or higher	Minimum: 800x600	Recommended: 1024 x 768 or higher
Database Software	N/A		Microsoft SQL Server 2005 Express	
Minimum Software	Microsoft Windows .NET Framework 2.0, Microsoft Data Access Components (MDAC) 2.8 Microsoft Internet Explorer 6.0 with SP 1, Installer 3.0		Microsoft Windows .NET Framework 2.0, Microsoft Data Access Components (MDAC) 2.8 Microsoft Internet Explorer 6.0 with SP 1, Installer 3.0	

Windowmaker How To.... Install / Upgrade to Windowmaker Lite 5.7



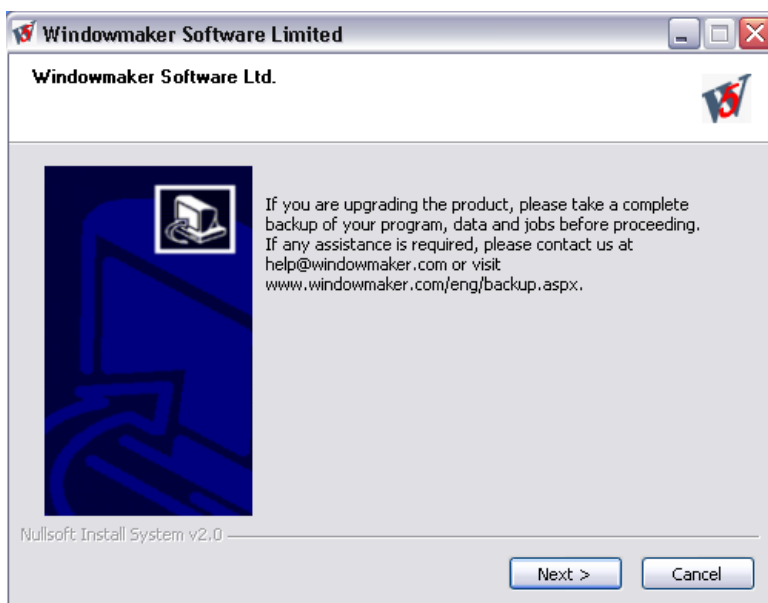
Windowmaker Lite 5.7 Installation

Windowmaker Lite requires Data for the program to run successfully. For the existing users having their own data, it is not necessary to install data. However, if you are installing Windowmaker Lite for the first time, you must install a data set. A wide range if available – contact us for more information.

Installation Steps

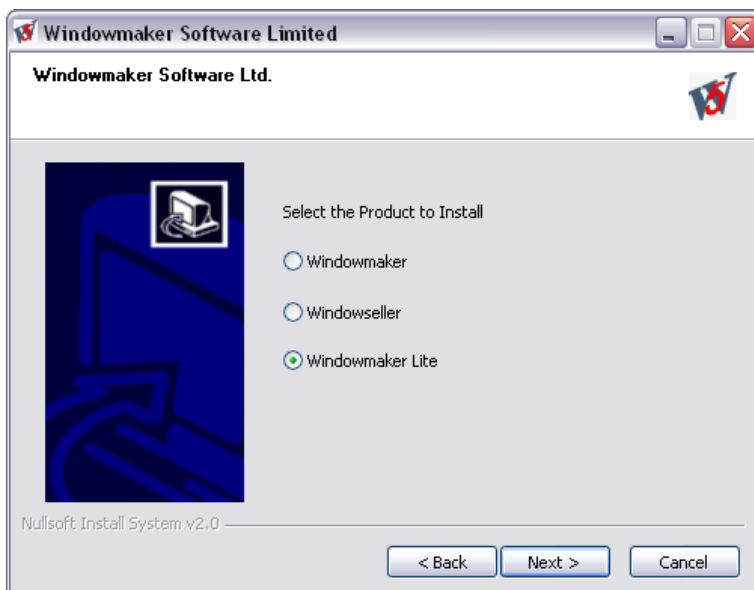
Follow the below mentioned instructions to install Windowmaker Lite:

1. From either the CD or the website download, run the Windowmaker Installation Program
2. A backup confirmation screen will appear



Click 'Next'

3. A Product Selection screen will appear – choose Windowmaker Lite

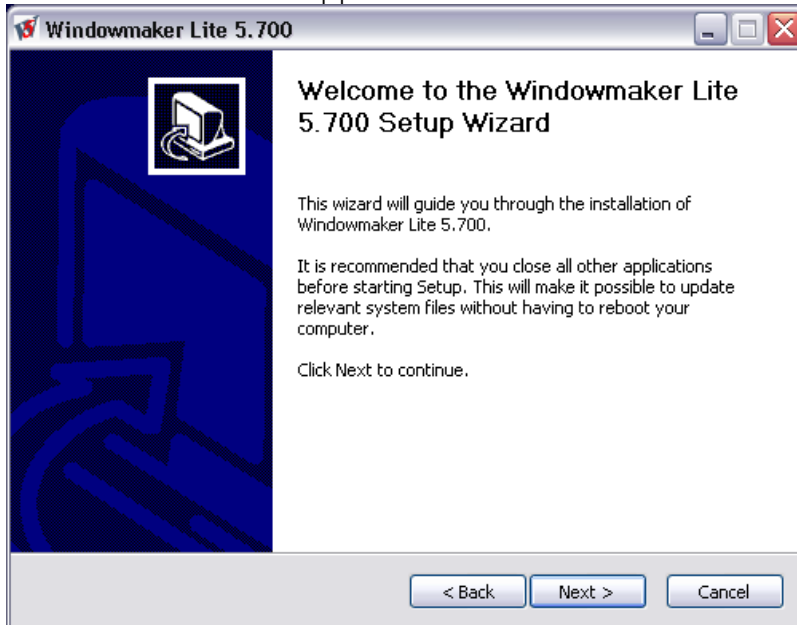


Windowmaker How To....

Install / Upgrade to Windowmaker Lite 5.7

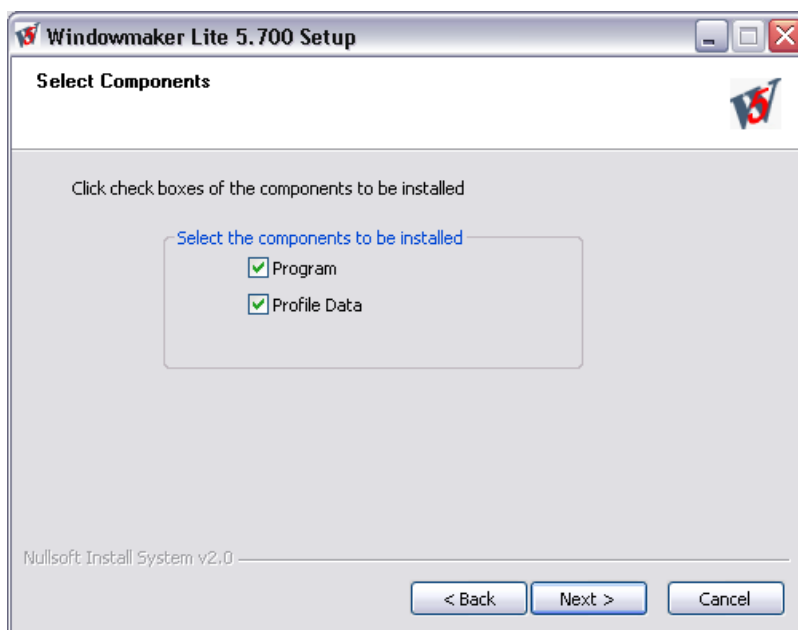
Click 'Next'

4. A welcome screen will appear



Click 'Next'.

5. The Windowmaker License Agreement page will appear. Accepting the license agreement will allow the program installation to continue
6. Select the components to be installed:



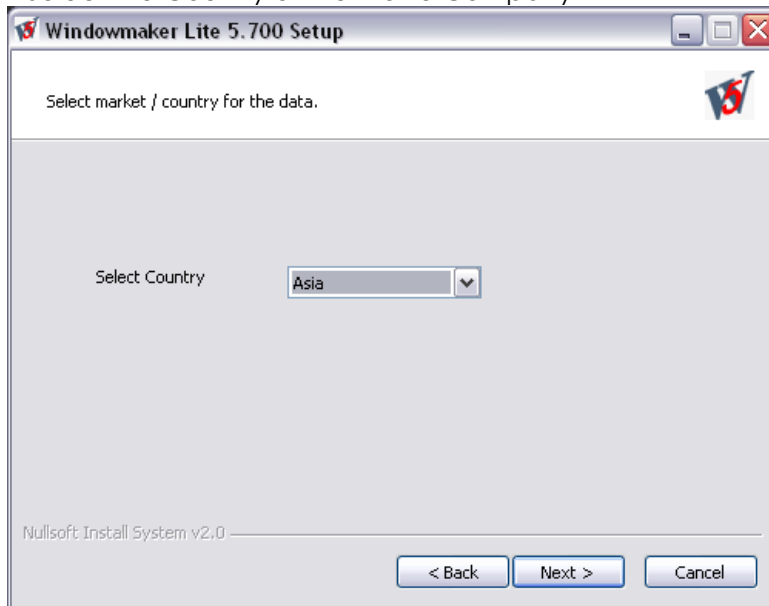
- 'Program' to install the Program and demonstration data.
- 'Profile Data' to install data of a Profile Company.

Please Note, we advise against installing profile data where you already have existing data you wish to continue using.
Click 'Next'

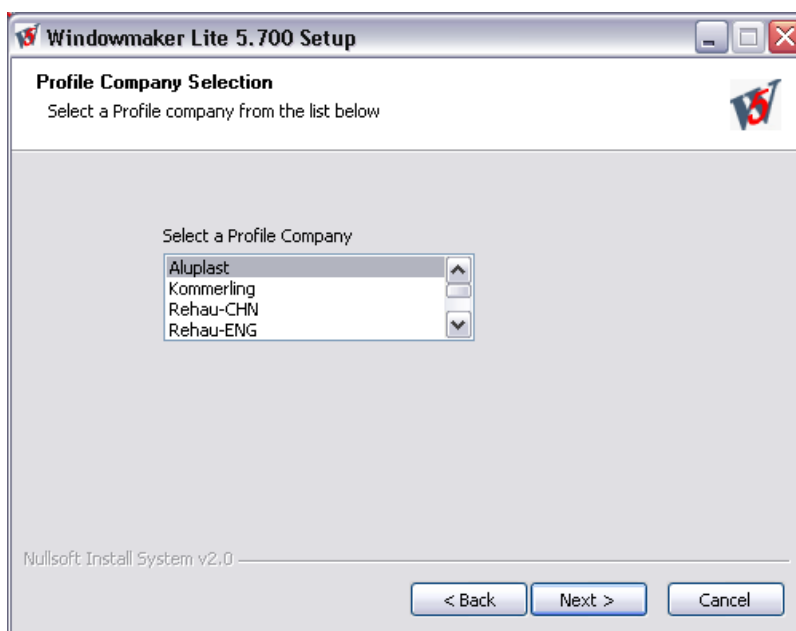
7. If installing just the Program, proceed to Step 9

Windowmaker How To.... Install / Upgrade to Windowmaker Lite 5.7

8. If installing Program and Profile Data:
- Select the Country of the Profile Company



Click 'Next'



- Select the Profile Company
- Select a folder to install the profile data

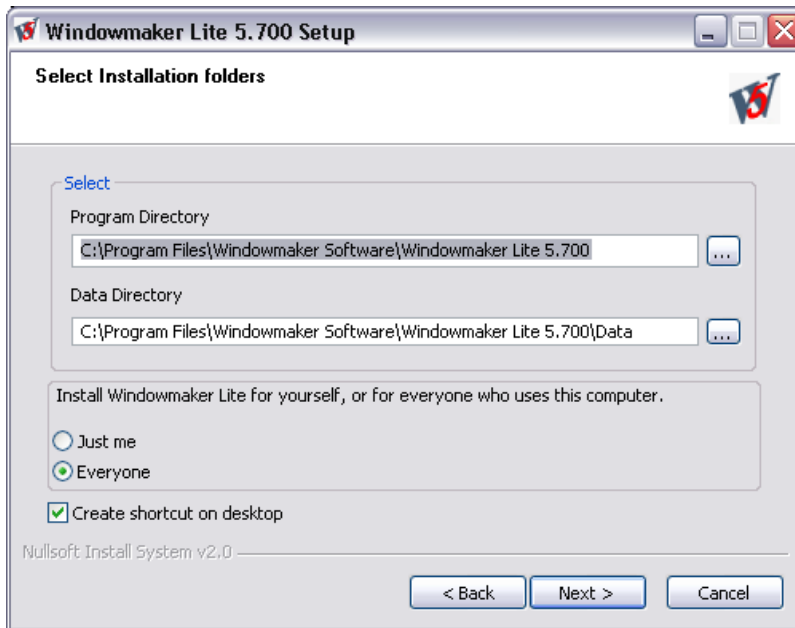
Click 'Next'

Windowmaker How To....

Install / Upgrade to Windowmaker Lite 5.7



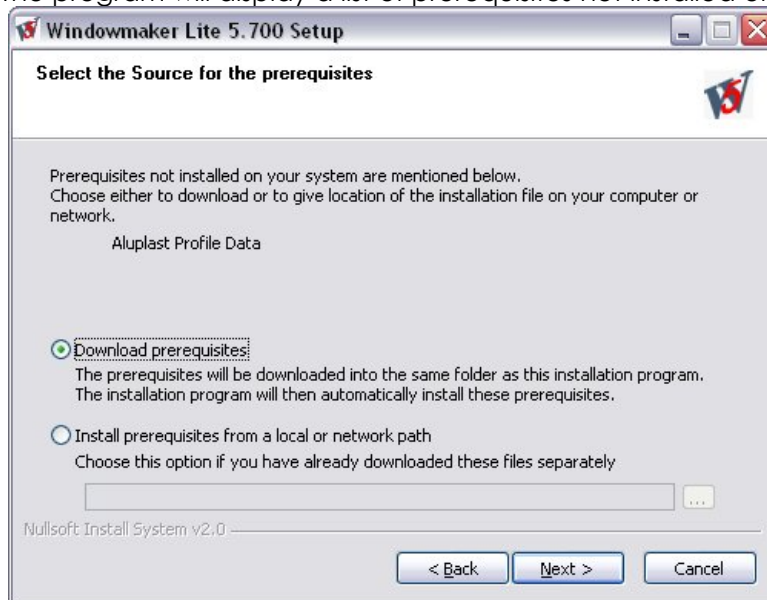
9. Select the Installation Folders & Access Rights



- Set the location for 'Program Directory'
- Set the location for 'Windowmaker Data Directory'
- Select 'Just me' or 'Everyone' – usually we would recommend selecting 'Everyone'
- Select 'Create shortcut on desktop' to have shortcut of the program on desktop.

Click 'Next'

10. The program will display a list of prerequisites not installed on your system



Click 'Install'

This will install the prerequisites and the Windowmaker Lite upgrade/installation

11. Only if installing Profile Data, enter the Profile Data password provided by Windowmaker Software Ltd. when prompted

12. A log file displaying information about Program directory and Data directory will appear.

Click 'Finish'.

Frequently Asked Questions

What should I do before I start installing Windowmaker Lite 5.7?

Keep the following things in mind before you start installing Windowmaker Lite 5.7:

- ▷ Take a complete back up of your data and database. For details, visit www.windowmaker.com/eng/backup.aspx
- ▷ Ensure that you read and understand the 'Installation Guide' section.
- ▷ Ensure that the latest operating system service packs are installed. For system requirements see www.windowmaker.com/eng/faq.aspx and www.windowmaker.com/eng/infoexist.aspx
- ▷ Ensure that you have the 'Administrator' rights on the machine.