

Windowmaker **How To....** Install / Upgrade to Windowseller 5.7



Introduction

Please read the document before performing any of the steps. If you already have a version of Windowmaker installed, **you must take a complete back up of your data and database** before progressing with the installation of a new version of Windowmaker.

The Installation Program will guide you through all the steps below, however these additional notes are designed to help answer any additional questions.

Please contact your Windowmaker supplier if you want help with the backup. You can also visit www.windowmaker.com/eng/backup.aspx

From Windowseller 5.5 onwards, you require Microsoft SQL Server 2005 Express Edition, with the option of Advanced Services (for additional features like reporting).

For more information on Microsoft SQL Server, please contact us on help@windowmaker.com or go to the Microsoft website at www.microsoft.com

PLEASE NOTE:

It is important to read this entire document, including Frequently Asked Questions, before you start installing Windowseller 5.7. This new version contains several pre-requisites, so it is important to ensure your system is ready for the upgrade. In particular, please ensure:

- ▷ Your hardware and software meets the minimum requirements.
- ▷ You have performed a backup.
- ▷ You have requested & received your new license file from Windowmaker (if you have additional paid-for options)

Minimum Requirements

Windowseller				
	Workstation		Server	
Processor	Minimum: 600 MHz processor	Recommended: 1 GHz processor or more	Minimum: 600 MHz processor	Recommended: 1 GHz processor or more
Operating System	Windows 2000 with SP3 Windows XP with SP2		Windows XP Professional with SP2 Windows Server 2000 Windows Server 2003 with SP1	
Memory	Minimum: 256 MB RAM	Recommended: 512 MB RAM or more	Minimum: 512 MB RAM	Recommended: 1 GB RAM or more
Hard Disk Space	200MB for installation		Required space varies with number of Jobs Minimum: 10 GB, Recommended: 20 GB or more	
Display	Minimum: 800x600	Recommended: 1024 x 768 or higher	Minimum: 800x600	Recommended: 1024 x 768 or higher
Database Software	N/A		Microsoft SQL Server 2005 Express	
Minimum Software	Microsoft Windows .NET Framework 2.0, Microsoft Data Access Components (MDAC) 2.8 Microsoft Internet Explorer 6.0 with SP 1, Installer 3.0		Microsoft Windows .NET Framework 2.0, Microsoft Data Access Components (MDAC) 2.8 Microsoft Internet Explorer 6.0 with SP 1, Installer 3.0	

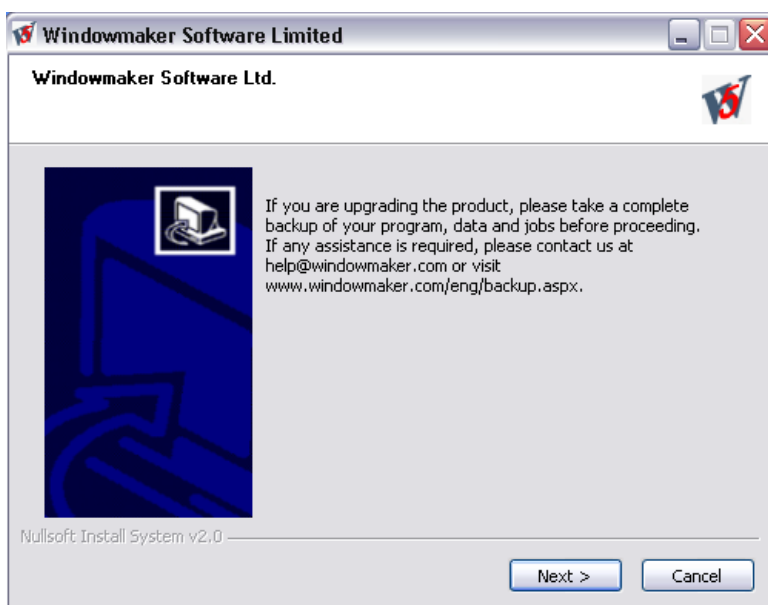
Windowseller 5.7 Installation

All the above Products require 'Data' for the program to run successfully. For the existing users having their own data, it is not necessary to install data. However, for a new user it is mandatory to install the 'Program' as well as 'Data'. Wide ranges of data sets are available for the users to select from, to suit their requirements.

Installation Steps

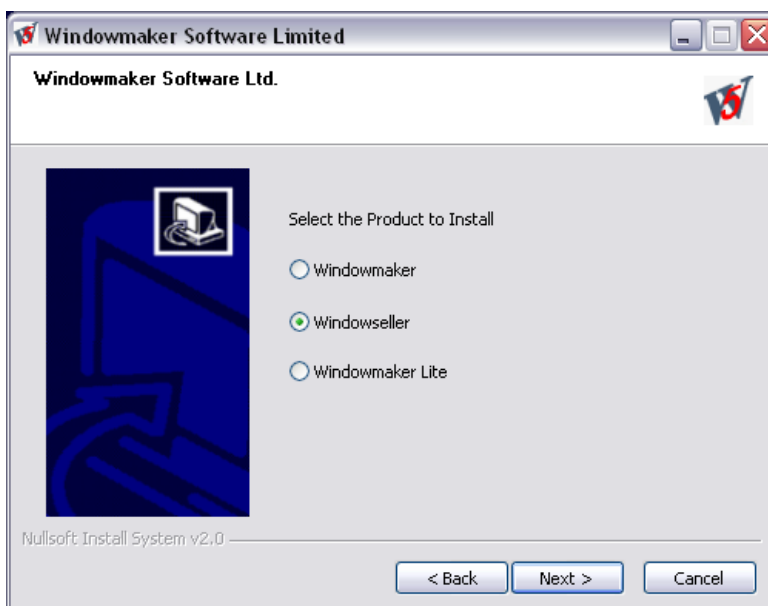
Follow the below mentioned instructions to install Windowseller:

1. From either the CD or the website download, run the Windowmaker Installation Program. A backup confirmation screen will appear



Click 'Next'

2. A Product Selection screen will appear – choose Windowmaker



Click 'Next'

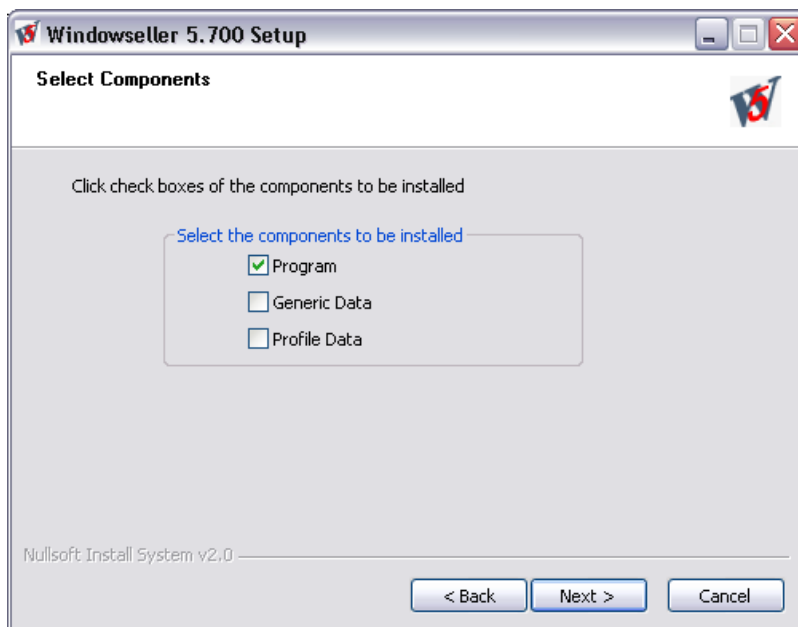
Windowmaker How To.... Install / Upgrade to Windowseller 5.7

3. A welcome screen will appear



Click 'Next'.

4. The Windowmaker License Agreement page will appear. Accepting the license agreement will allow the program installation to continue
5. Select the components to be installed:



- 'Program' to install the Program and demonstration data.
- 'Generic Data' to install basic data
- 'Profile Data' to install data of a Profile Company.

Please Note, we advise against installing profile data where you already have existing data you wish to continue using.

Click 'Next'

6. If installing Program and/or Generic Data, proceed to Step 8

Windowmaker How To.... Install / Upgrade to Windowseller 5.7

7. **ONLY** if installing Profile Data:
 - Select the Country of the Profile Company



Click 'Next'

- Select the Profile Company



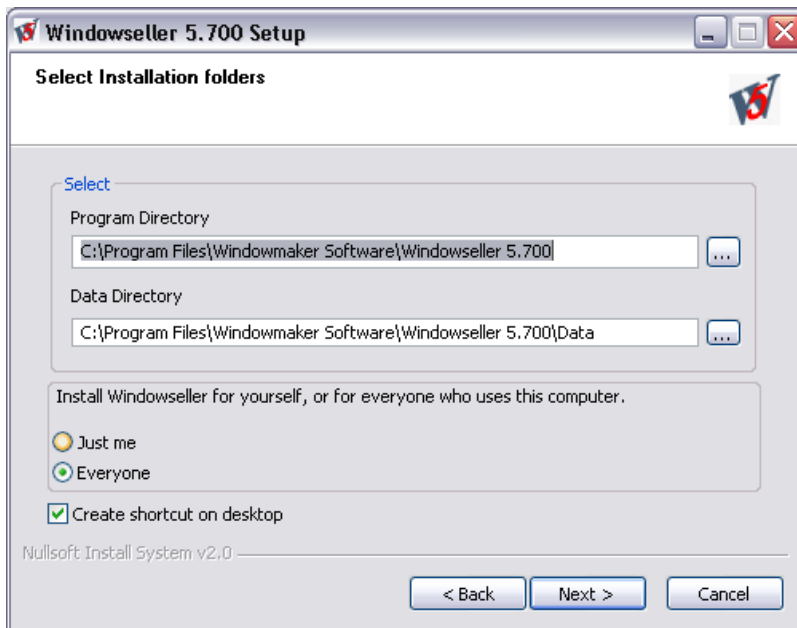
Please Note, this screen will not appear if you are installing the program and Generic data.

Click 'Next'

Windowmaker How To....

Install / Upgrade to Windowseller 5.7

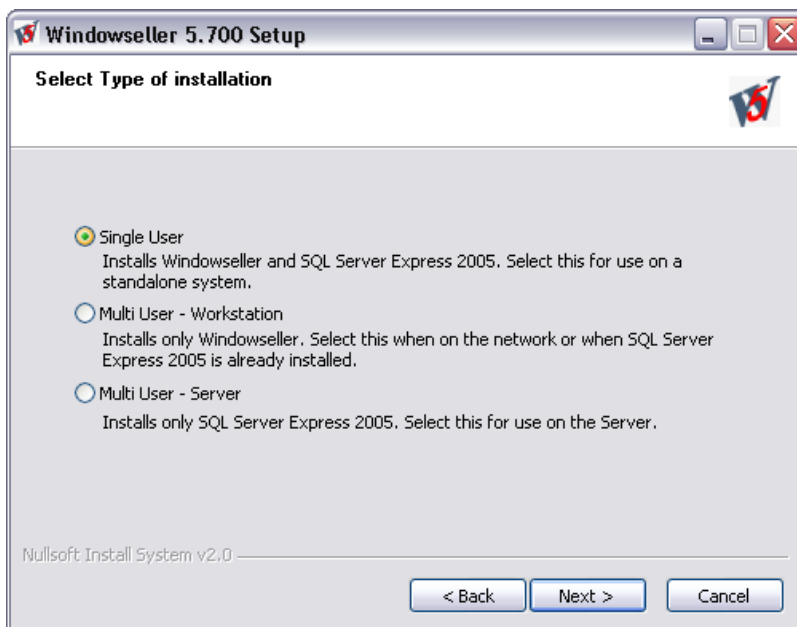
8. Select the Installation Folders & Access Rights



- Set the location for 'Program Directory'
- Set the location for 'Windowmaker Data Directory'
- Select 'Just me' or 'Everyone' – usually we would recommend selecting 'Everyone'
- Select 'Create shortcut on desktop' to have shortcut of the program on desktop.

Click 'Next'

9. The Installation Program will ask you to choose the type of installation:

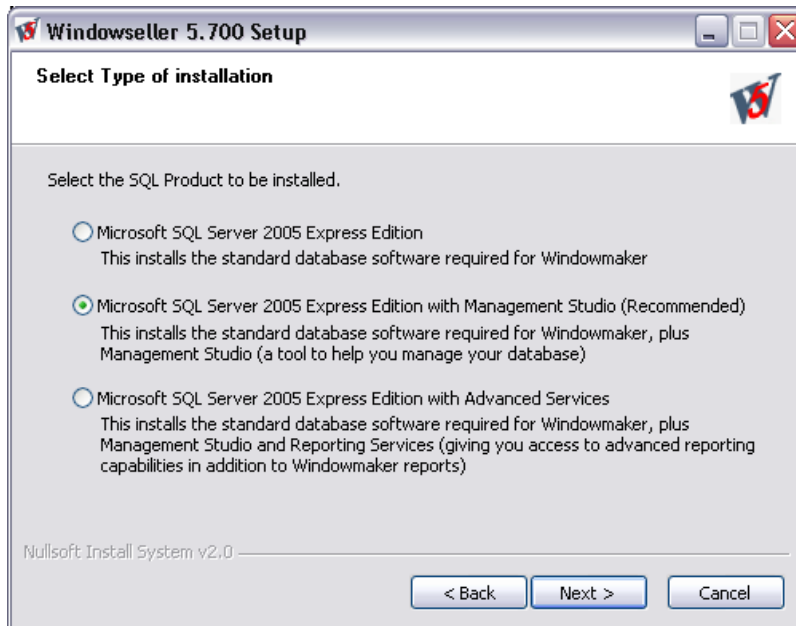


Click 'Next'

10. If you selected **Single User**, go to Step 11
If you selected **Multi User Workstation**, go to Step 12
If you selected **Multi User Server**, go to Step 13

11. Single User Installation

A. The program will ask which SQL products you want to install:

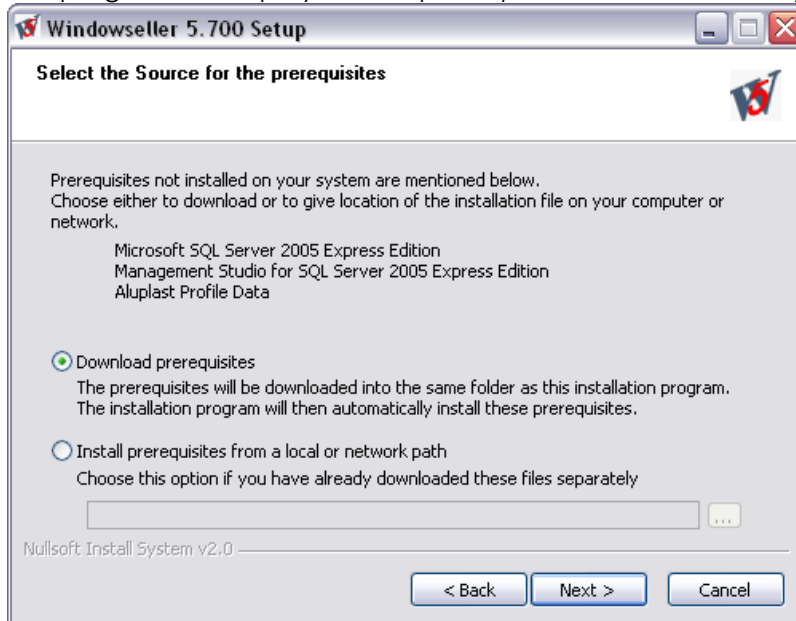


Choose one and **Click 'Next'**.

B. The program will ask you to enter login details for Microsoft SQL Server 2005 Express Edition

- Enter Database Server Name
 - Enter SA (this is for the Database Administrator) password
- Click 'Next'**

C. The program will display a list of prerequisites not installed on your system



Click 'Install'

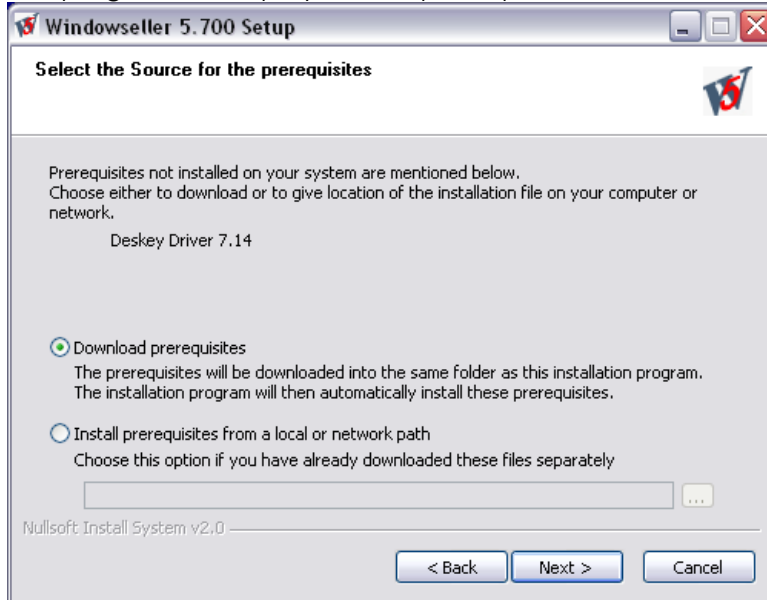
This will install the prerequisites and Windowmaker upgrade. You are given the choice to download any pre-requisites, or install from a local or network location

D. Only if installing Profile Data, enter the Profile Data password provided by Windowmaker Software Ltd. when prompted

- E. A log file displaying information about Program directory and Data directory will appear.
Click 'Finish'.

12. Multi User Workstation

- A. The program will display a list of prerequisites not installed on your system



Please Note: If the installation program for the Profile data is in the same folder as the Installation program, this dialogue box will not be prompted.

Click 'Install'

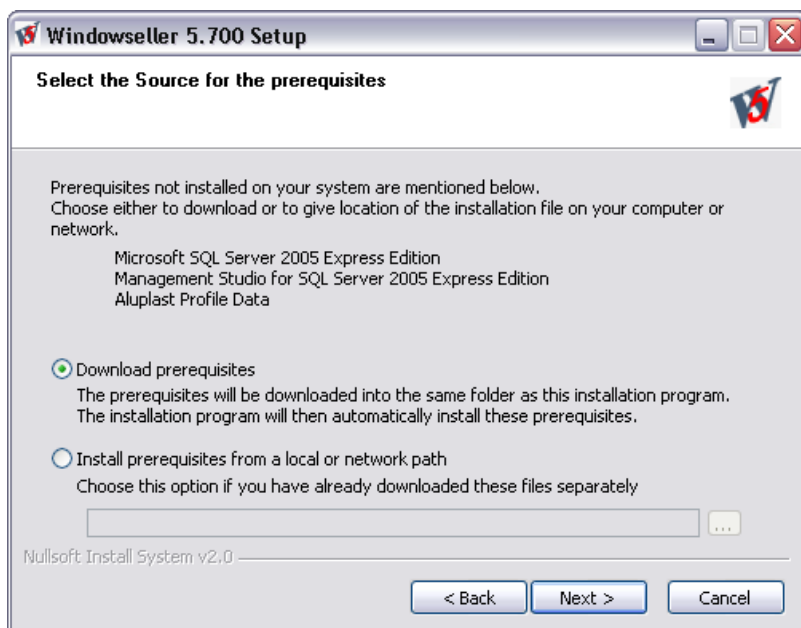
This will install the prerequisites and Windowmaker upgrade

- B. Only if installing Profile Data, enter the Profile Data password provided by Windowmaker Software Ltd when prompted
- C. A log file displaying information about Program directory and Data directory will appear
Click 'Finish'

13. Multi User Server

- A. The program will ask which SQL products you want to install:
Choose one and **Click 'Next'**.
- B. The program will ask you to enter login details for Microsoft SQL Server 2005 Express Edition.
- Enter Database Server Name
- Enter SA password
Click 'Next'.
- C. The program will display a list of prerequisites not installed on your system.

Windowmaker **How To....** Install / Upgrade to Windowseller 5.7



- Choose '**Download prerequisites**' to download the prerequisites. Ensure that you are connected to the Internet before proceeding.
- Choose '**Install prerequisites from a local or network path**' to provide the location where the installation program of the missing prerequisites lie on your computer or network.
Click 'Next'.

D. The program will start downloading the prerequisites.
After completing the download, a 'Confirm Installation' dialogue box will appear. A list of downloaded prerequisites that need to be installed will be displayed.
Click 'Install'.

E. This will install the prerequisites

F. Only if installing Profile Data, enter the Profile Data password provided by Windowmaker Software Ltd when prompted

G. A log file displaying information about Program directory and Data directory will appear
Click 'Finish'

Frequently Asked Questions

What should I do before I start installing Windowseller 5.7?

Keep the following things in mind before you start installing Windowseller 5.7:

- ▷ Take a complete back up of your data and database. For details, visit www.windowmaker.com/eng/backup.aspx
- ▷ Ensure that you read and understand the 'Installation Guide' section.
- ▷ Ensure that the latest operating system service packs are installed. For system requirements see www.windowmaker.com/eng/faq.aspx and www.windowmaker.com/eng/infoexist.aspx
- ▷ Ensure that you have the 'Administrator' rights on the machine.
- ▷ In a multi-user environment, ensure that Windowseller is not running on any machine.