

SQL Server 2008 R2 Express Edition Installation Guide



Hardware, Software & System Requirements for SQL Server 2008 R2 Express Edition

To get the overview of SQL Server 2008 R2 Express Edition, click [here](#).

Please refer links given below for all the details related to Hardware, Software & System Requirements for SQL Server 2008 R2 Express Edition.

1. [Hardware & Software Requirements](#)
2. [System Requirements](#)

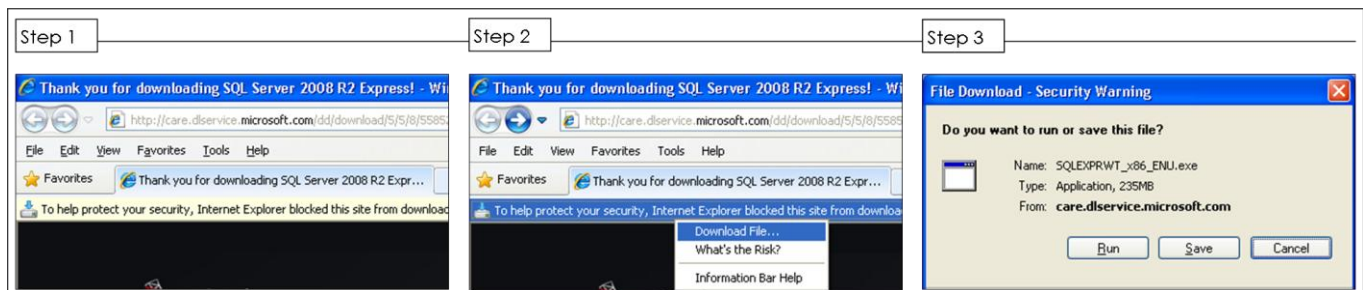
Please make sure you comply with these requirements before proceeding.

Steps for Downloading SQL Server 2008 R2 Express Edition:

Depending upon the type of your computer, you can download [32-bit](#) or [64-bit](#) SQL Server 2008 R2 Express Edition:

- Select the language for download.
- Click 'Download Now'.

Note: Depending on your security settings, you may encounter these steps:



SQL Server 2008 R2 Express Edition Installation Guide



Steps for Installing SQL Server 2008 R2 Express Edition:

There are a number of prerequisites for installing SQL Server 2008 R2 Express Edition. Here is the list and the basic instructions:

1. Login with administrative privileges on the computer where SQL Server 2008 R2 Express Edition is to be installed.
2. Ensure a minimum of 1 GB free space on the drive on which you wish to install the SQL Server 2008 R2 Express Edition.
3. Download and install .NET Framework 3.5 SP1 from [here](#).
4. Download and install Windows Installer 4.5 from [here](#).
5. Download and install Windows PowerShell 1.0 from [here](#).
6. Uninstall SQL Server Management Studio 2005 if previously installed. Otherwise the setup of SQL Server 2008 R2 Express Edition will give an error during installation.
7. Reboot the computer.
8. Download SQL Server 2008 R2 Express Edition installer, if not already done, from [here](#).
9. Run SQL Server 2008 R2 Express Edition installer.
10. If SQL Server 2008 R2 Express Edition prerequisites are not found then the installation wizard indicates the missing prerequisites. Once the prerequisites are installed, re-start the computer, re-run the SQL Server 2008 R2 Express Edition installer to continue with the installation.
11. SQL Server Installation opens up.

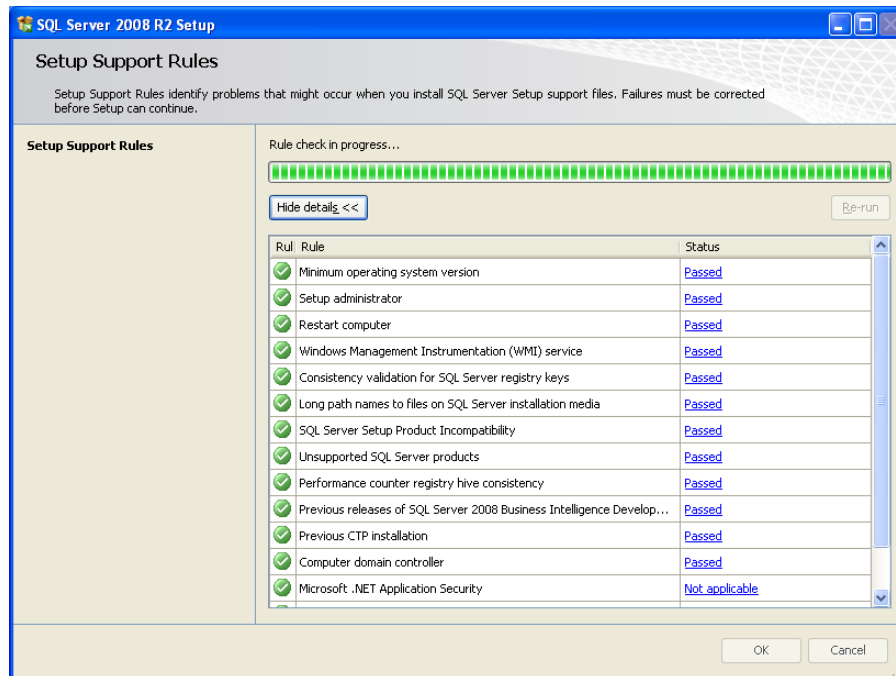
SQL Server 2008 R2 Express Edition Installation Guide



SQL Server Installation

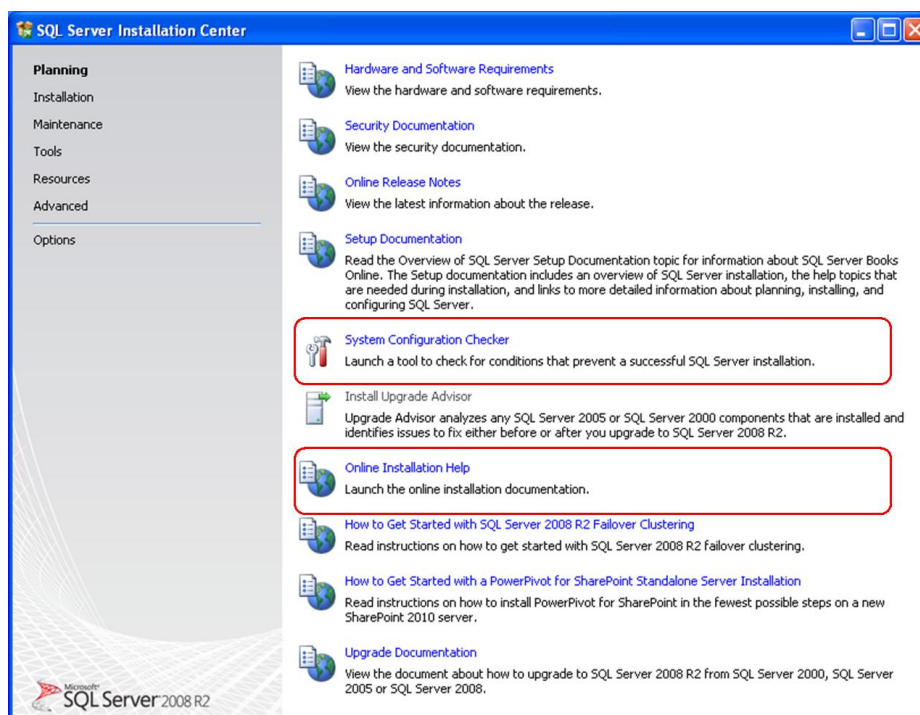
1. Planning.

- Run 'System Configuration Checker' to look for any potential issues that can prevent the successful installation of SQL Server 2008 R2 Express Edition.



- If any issues are found they must be fixed before continuing with the wizard. You can also select the 'Online Installation Help' for help regarding Installation.

The dialog mentioned below remains open, and can be revisited at any time during the installation procedure.



SQL Server 2008 R2 Express Edition Installation Guide



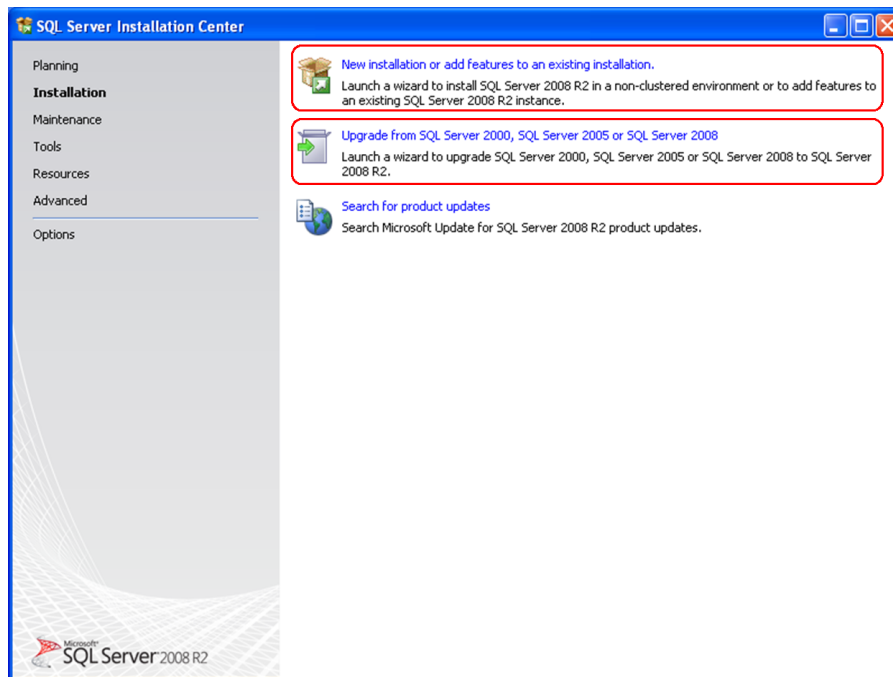
2. Go to Installation.

Two ways to install SQL Server 2008 R2 Express Edition is mentioned below:

- a. Install a new instance of SQL Server 2008 R2 Express Edition (**Recommended**).
Select 'New installation or add features to an existing installation' link.
- b. Upgrade existing SQL Server 2000 Express Edition (Microsoft Desktop Engine), SQL Server 2005 Express Edition or SQL Server 2008 SP1 Express Edition to SQL Server 2008 R2 Express Edition.

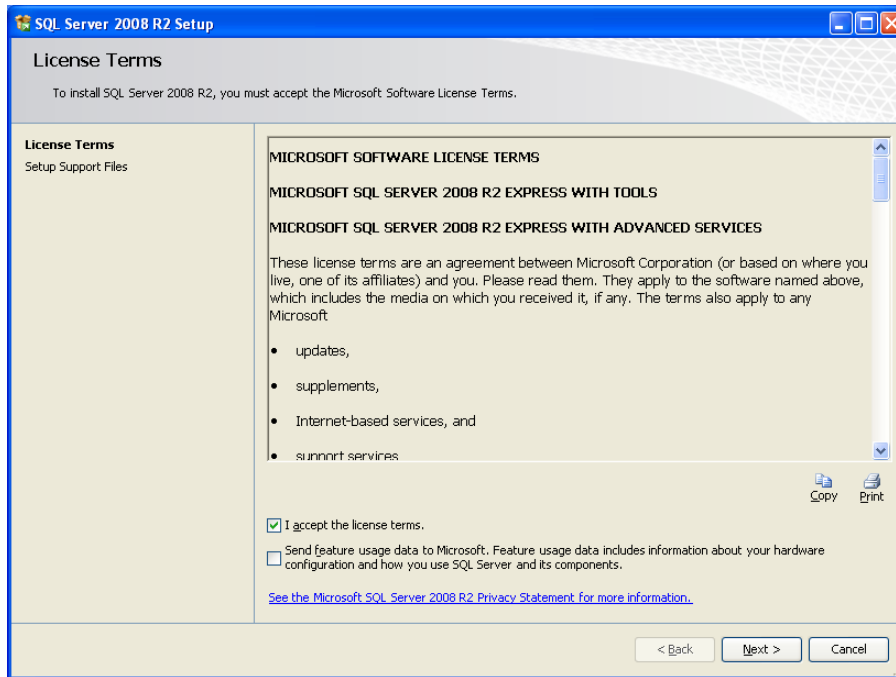
Notes:

- If you wish to continue running your existing Windowmaker product with SQL Express 2005, then you must install a new instance of SQL Server 2008 R2 Express.

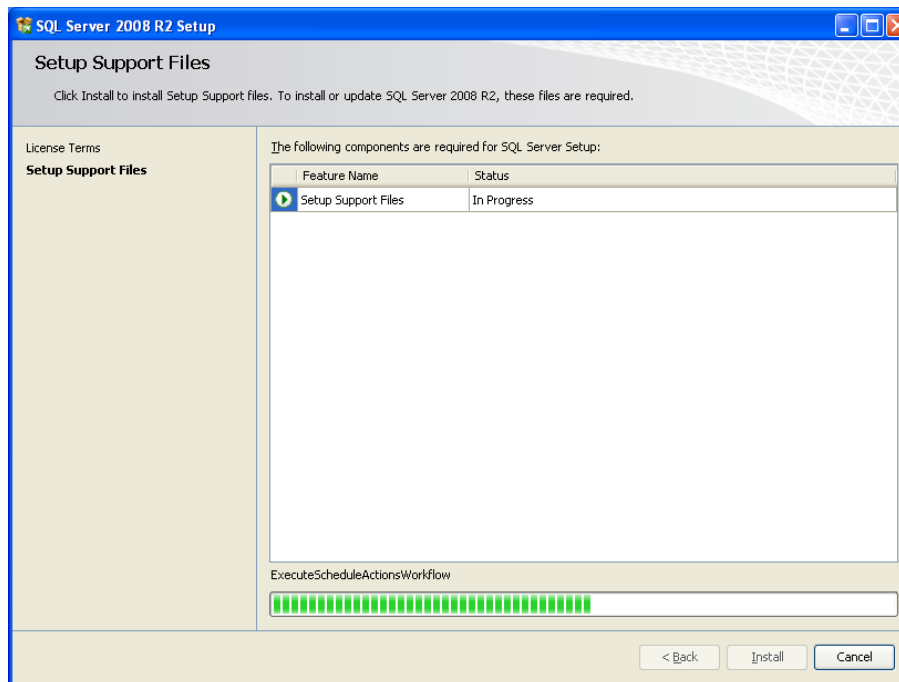


SQL Server 2008 R2 Express Edition Installation Guide

3. License Terms
Read and accept the terms. Click 'Next'.



4. Setup Support Files. Click 'Install'.

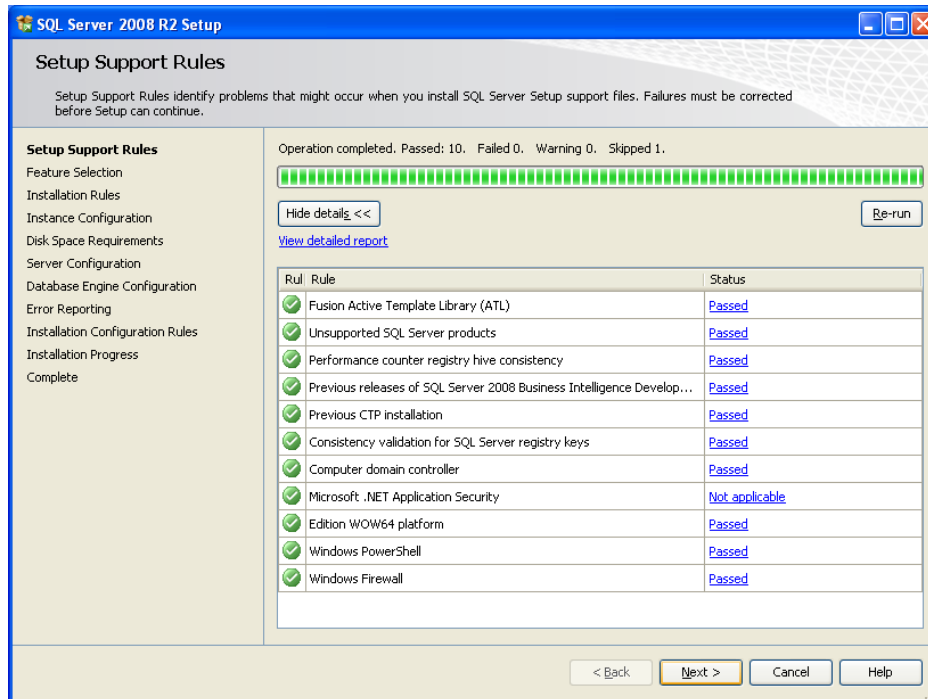


SQL Server 2008 R2 Express Edition Installation Guide



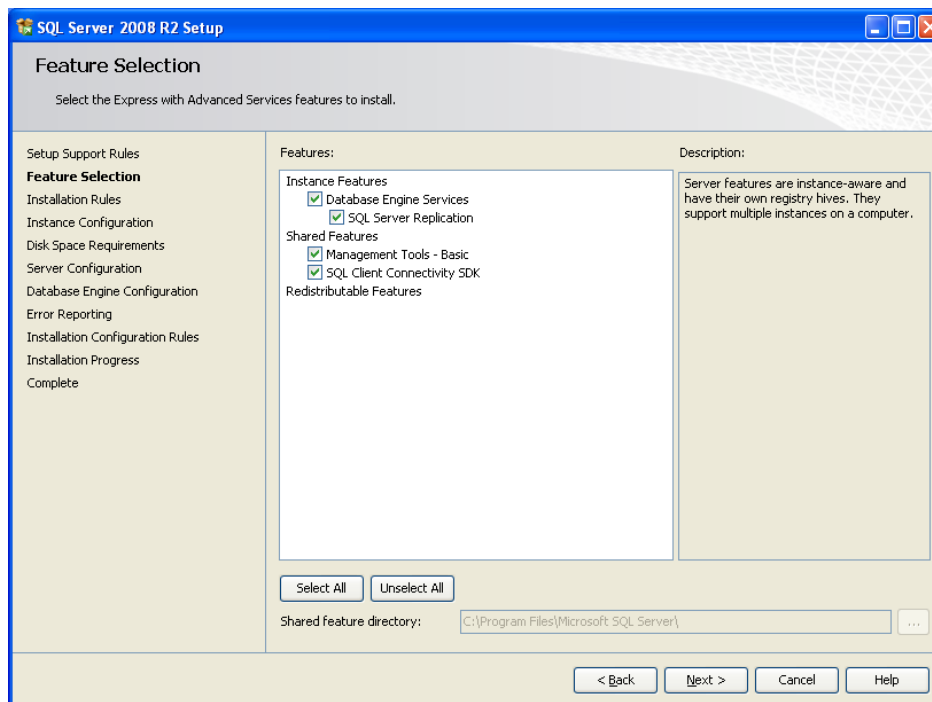
5. Setup Support Rules.

If any issues are found (indicated by a 'Failed' status), they should be fixed before continuing with the wizard else click 'Next'.



6. Feature Selection

On selection of 'Management Tools – Basic' will install SQL Server Management Studio. Press 'Select All' button to select all the features. Click 'Next'.



SQL Server 2008 R2 Express Edition Installation Guide

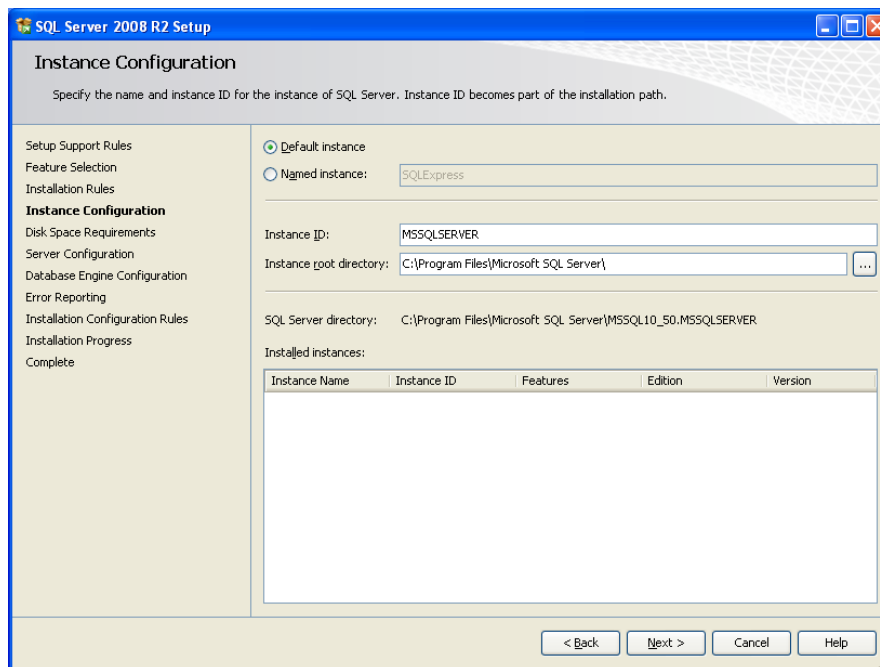


7. Instance Configuration.

- Press 'Default instance' to install an instance with default name.
- Press 'Named instance' radio button to specify another name (All-previously installed instances of any SQL version are listed below).

The Instance name is displayed automatically as the Instance ID. Accept the default folder for installing the instance as displayed in the 'Instance root directory' or type in a different path or browse for the required folder.

It is **recommended** to continue with the default values. Click 'Next'.

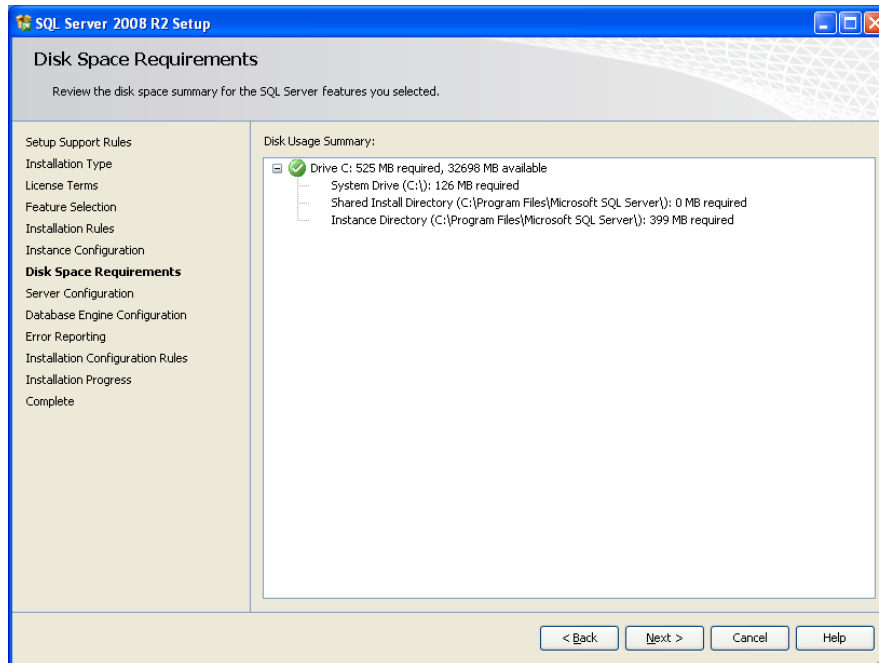


8. Disk Space Requirements

The dialog displays the details of available and required disk space. In case of inadequate space, there is a Red Cross mark instead of the green tick (see below).

Create the required space on the drive or choose a different drive to resolve the issue and click 'Next'.

SQL Server 2008 R2 Express Edition Installation Guide

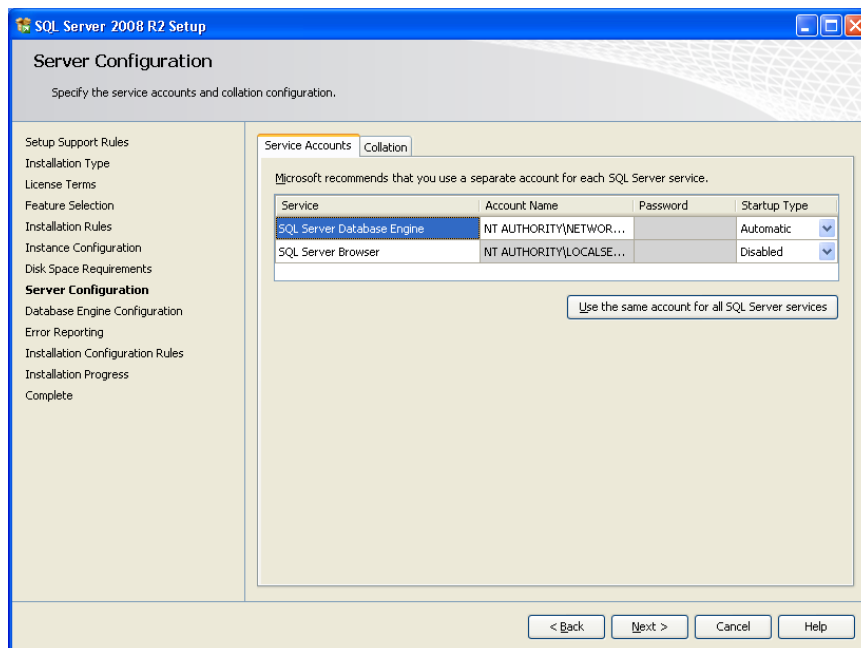


9. Server Configuration.

On 'Server Configuration' dialog, Service Accounts tab displays the service account details under which SQL Server services should run and the startup type for each. The recommended choices are shown below.

Click 'Next'.

Note: The details on the Collation tab are automatically configured. It is recommended that these be left unchanged.



10. Database Engine Configuration.

On 'Database Engine Configuration' dialog, 'Account Provisioning' tab displays authentication mode and specifies the SQL Server administrators.

SQL Server 2008 R2 Express Edition Installation Guide



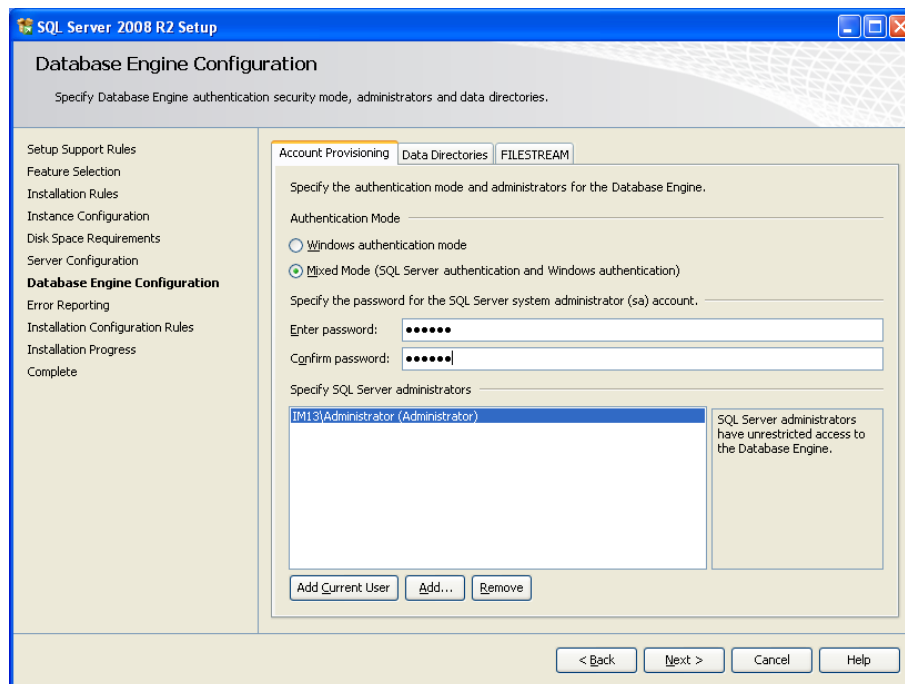
It is highly recommended that you select 'Mixed' rather than 'Windows' Authentication Mode and give '#Wm2008!' as the password.

SQL Server Administrators:

- To make the current user as SQL Server Systems Administrator, click 'Add Current User'.
- To make another user the Administrator, click 'Add'.
- To remove a user from the list, select the user from the list and click 'Remove'.

Else click 'Next'.

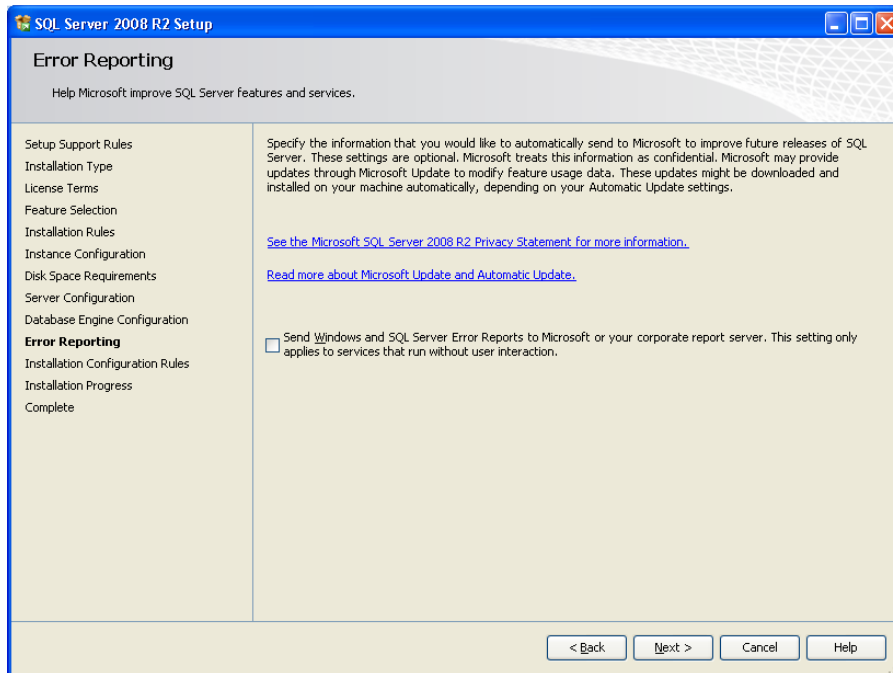
Note: It is recommended that users with 'Administrator' rights only should be added to this list.



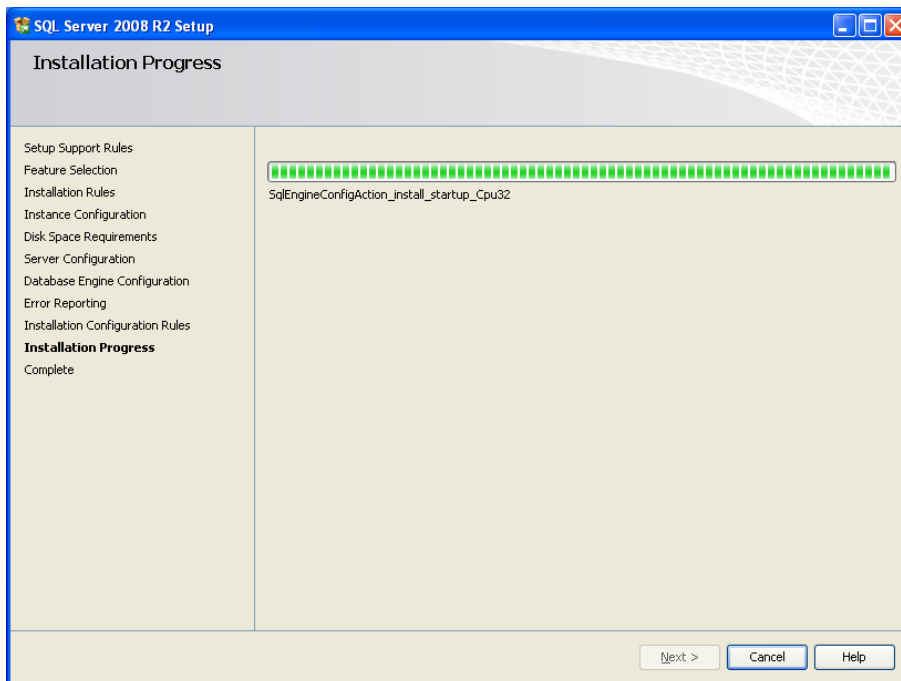
SQL Server 2008 R2 Express Edition Installation Guide



11. Error and Usage Reporting.
Retain the default selection and click 'Next'.



12. Installation Progress.
This dialog displays the progress bar for successful completion of the installation. Click 'Next'.

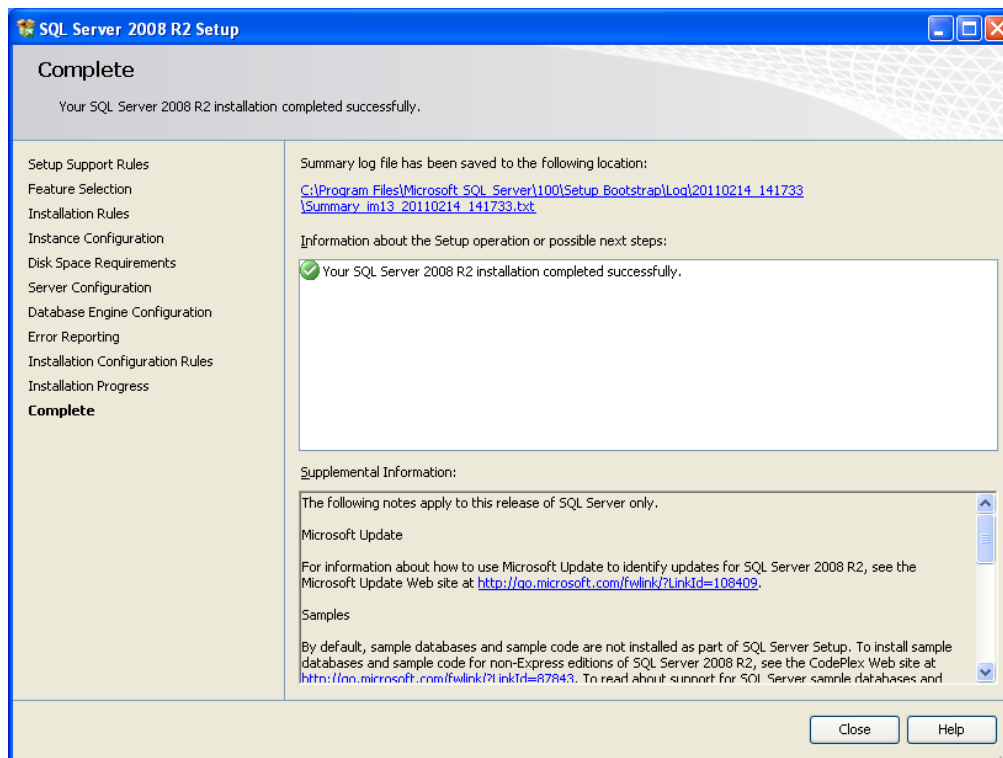


SQL Server 2008 R2 Express Edition Installation Guide



15. Complete.

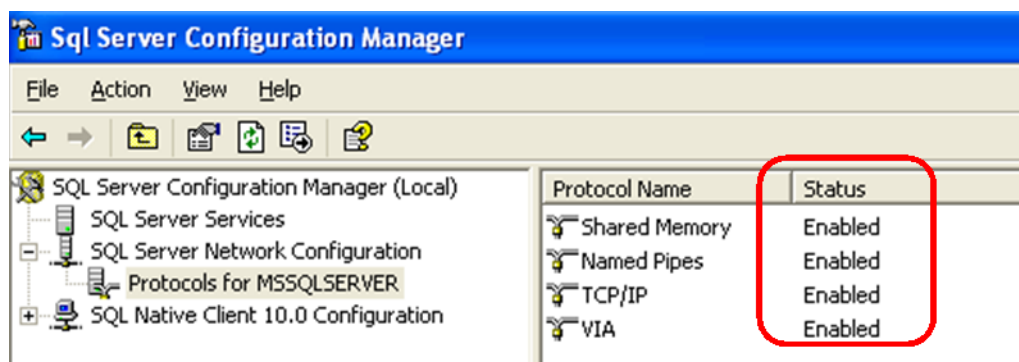
The installation is now complete. Note the location of the SQL Server 2008 R2 Express Edition installation Summary log. Click 'Next' to go back to the SQL Server Installation.



16. Go to the SQL Server Configuration Manager from the Start menu.



This opens details of all the currently installed instances with the Protocol Name and Status. Select the instance and change all the statuses to 'Enabled'.



SQL Server 2008 R2 Express Edition Installation Guide



21. Go to SQL Server Services and click 'Start' to start the services of the recently installed instance.
These services should start running.

