

Windowmaker **What's New**

Windowmaker 5.9



- Pre-requisites for upgrading to Wm5.900 or higher..... 2
 - Database.....2
 - Operating System2
- General Enhancements 3
 - Order Entry.....3
 - Update Status3
 - Set up.....4
 - Batch Process.....4
 - Crystal Reports4
 - Database.....6
- Enhancements to Options.....7
 - Scheduling.....7
 - Production Scheduling.....7
 - Georgian.....7
- Enhancements to Windowmaker Lite.....7

Windowmaker **What's New**

Windowmaker 5.9



Pre-requisites for upgrading to Wm5.900 or higher

Database

- ▲ The program now supports SQL Server 2008.
- ▲ Any Windowmaker product using SQL Server Express Edition will require SQL Server Express 2008 Edition. Upgrading to Wm5.900 or higher will automatically change/migrate the database to use SQL Server 2008 Express Edition. These products will not work with SQL Server Express 2005 Edition.
- ▲ Any Windowmaker product using SQL Server (non-Express) Edition will work with both SQL Server 2005 and 2008 Editions.
- ▲ If you are using WM SQL Sales Clients that work with a local database and synchronise the same with the central Fabricator database (running WM SQL) then
 - The Fabricator must change to SQL Server 2008. Synchronisation is no longer supported in WM SQL with SQL Server 2005.
 - The WM SQL Sales Clients will require changing to SQL Server 2008 Express Edition.

Refer [Wm5.9 Upgrade Advisor](#) for instructions on how to upgrade your existing product to Wm5.9.

Refer [SQL Installation Guide](#) for instructions on downloading and installing SQL Server 2008 Express Edition.

Refer [WM Installation Guide](#) for instructions on downloading and installing Windowmaker 5.9.

Operating System

- ▲ The program extends support to
 - Microsoft Windows 7.
 - Microsoft Windows Server 2008 R2.
- ▲ The program no longer supports Microsoft Windows Server 2000, as it does not support SQL Server 2008. However, this restriction applies only if
 - Windows Server machine is also used as the Database Server (i.e. SQL Server is installed on the same machine). Note that it is possible to install SQL Express 2008 on non-server operating systems.
 - you want to upgrade to using SQL Server 2008. If you are using SQL Server 2005 non-Express edition then you can continue using it with Windows Server 2000.

Windowmaker **What's New**

Windowmaker 5.9



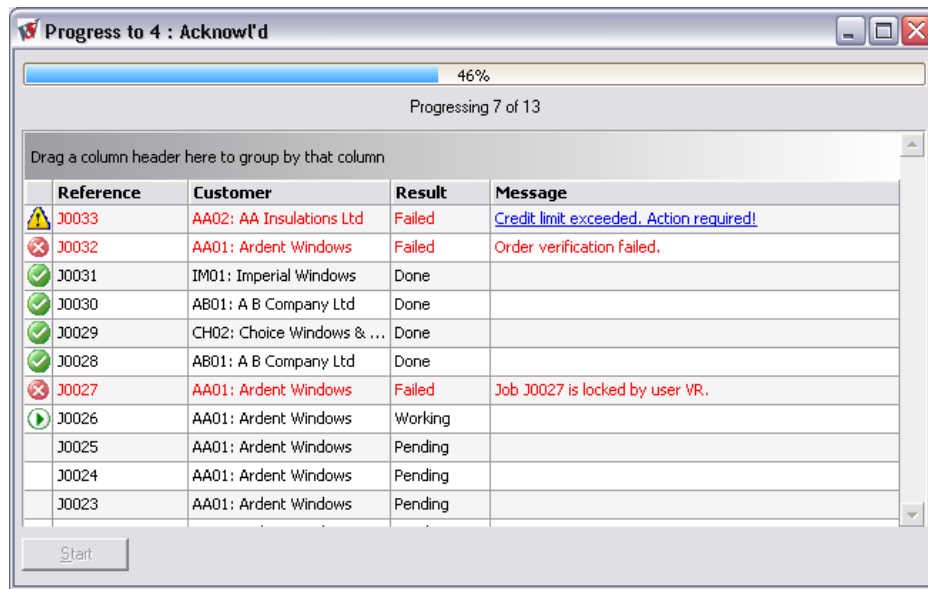
General Enhancements

Order Entry

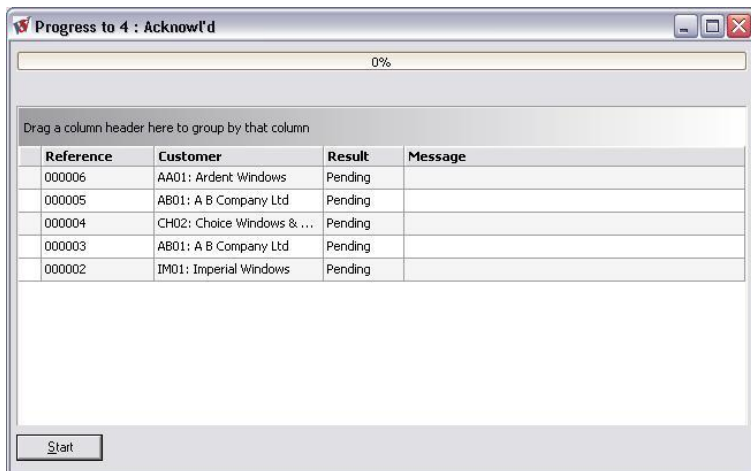
- ▲ The original Quote No., from which the job was converted, is now available against each job on the View Jobs screen for easy reference.
- ▲ Multiple discontinuous items can now be selected for Global Changes on the Job notebook.

Update Status

- ▲ You can now save time by updating the status of multiple Quotes, Jobs or Credit Jobs from the respective View screens, instead of having to update each one separately.

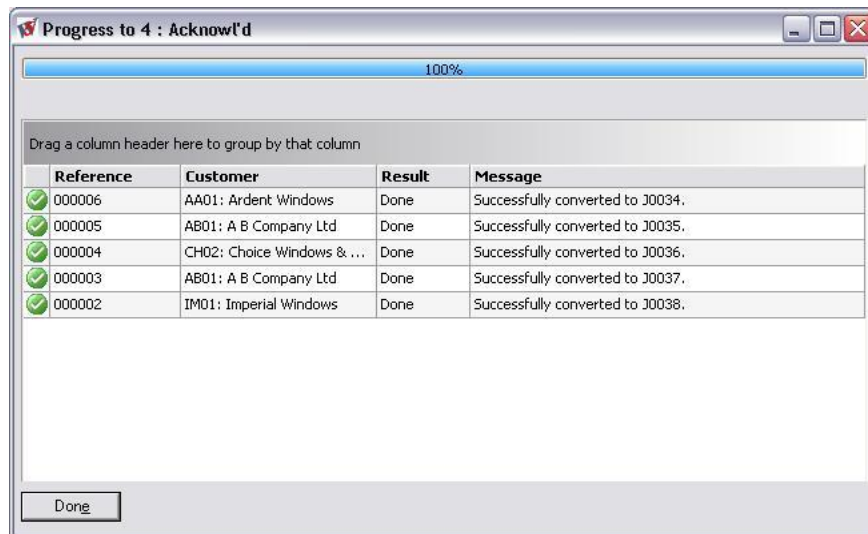


- ▲ You can now save time by converting multiple Quotes to Jobs from the View Quotes screen instead of having to convert each one separately.



Windowmaker **What's New**

Windowmaker 5.9



Set up

- ▲ 'Memory Variable' options of all types, 'Quantity', 'Size', 'Yes / No' and 'Part Group' are now supported.
 - Memory Variable is similar to normal Options except they are not stored in the Item and cannot be displayed or output.
 - As with temporary variables, values for Memory Variables can be set, changed and tested in rule conditions.
 - Memory Variables provide a considerable amount of power and flexibility in the set-up of options and rules.
- ▲ The unit part graphics positioned at the centre of the Pane/Sash/Frame are cropped to sightlines. This is particularly used to display panel images on the item graphics or similar.
- ▲ The colour of the unit parts displayed in the item graphics can be changed according to the finish specified using the corresponding option (using a .COL file). This was possible earlier with a complex setup requiring parts (and the corresponding images) duplicated for each colour variant. It is now simplified and can now be achieved with a single part.

Batch Process

- ▲ Notch positions for bottom profiles having non-standard end cuts in Angled shape items are now output on the Part Usage reports and Part Labels. This is also now output in the Link to Working Centre.

Crystal Reports

- ▲ The Standard Quotation Crystal report can now be printed with smaller or no item graphics. This helps reduce the number of pages and saves paper.
- ▲ Item graphics can now be set to be viewed from Inside or Outside on Crystal reports. This gives you the flexibility to have a different 'Viewed from' side for different reports.
- ▲ Size format, i.e. Metric, Imperial Decimal or Imperial Fraction, can be selected at the time of printing.

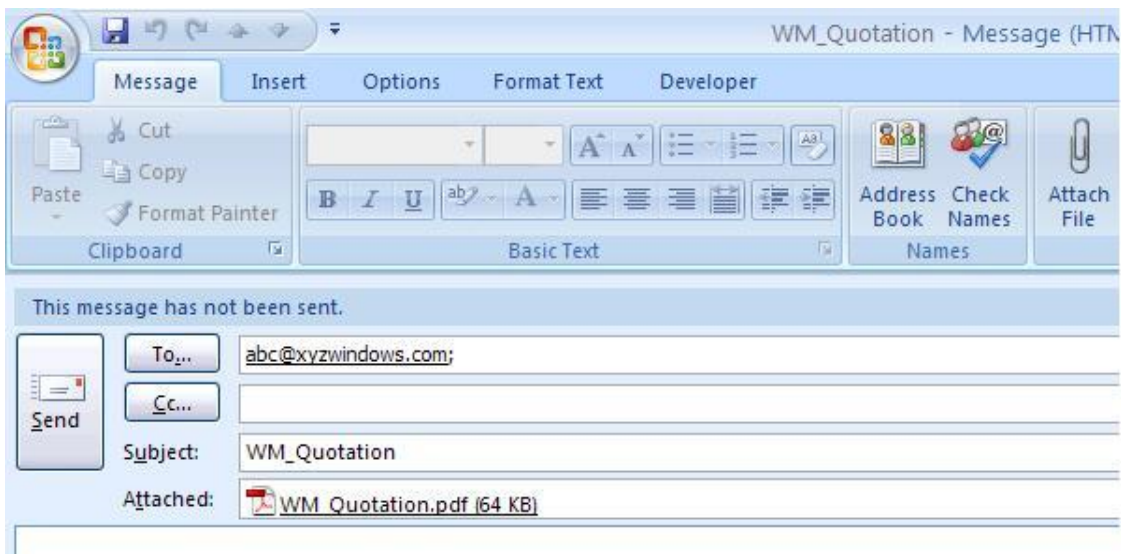
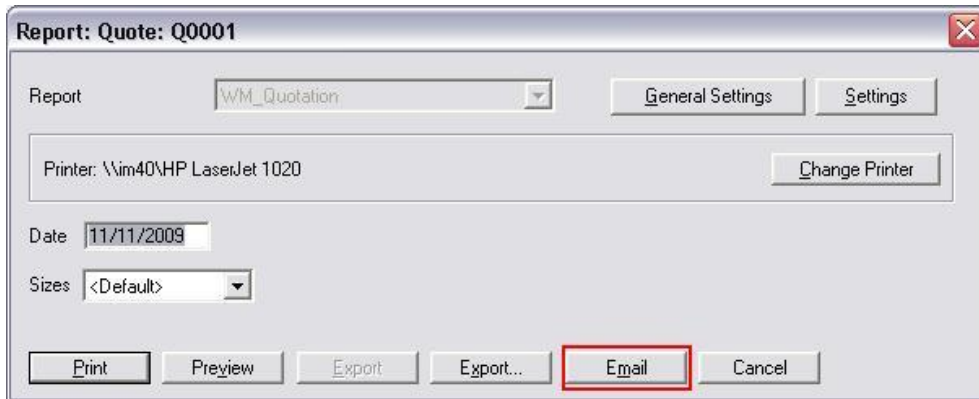
List of Reports where size format can be selected:

- Order Acknowledgement
- Purchase Order
- Invoice

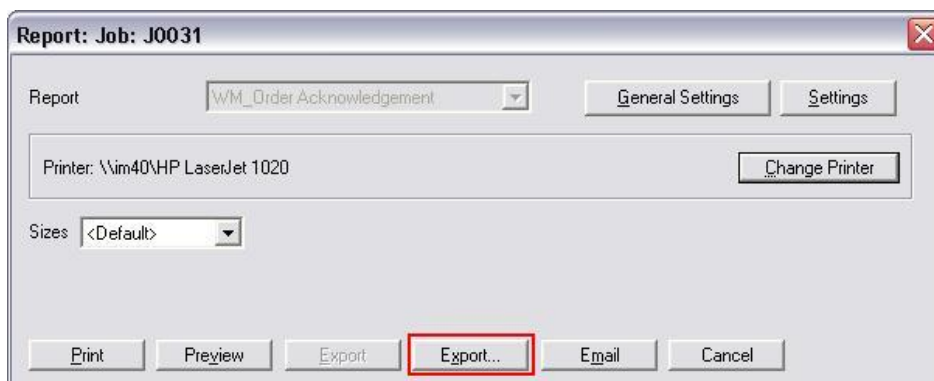
Windowmaker **What's New** Windowmaker 5.9



- o Quotation
 - o Production Document
 - o Glass Usage
 - o Glass labels
- ▲ You can now save time and eliminate mistakes (e.g. attaching a wrong document) by emailing a Crystal report directly from the program.

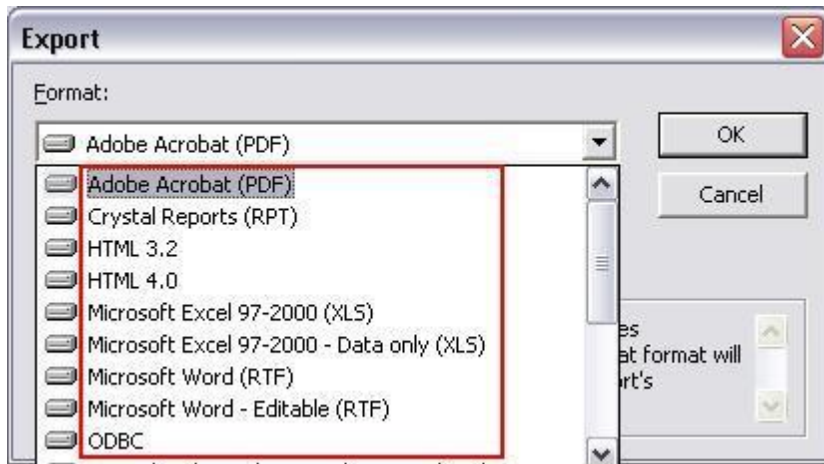


- ▲ You can now export a Crystal report in an appropriate format directly from the program. There are several formats to choose from.



Windowmaker **What's New**

Windowmaker 5.9



Database

- ▲ Delivery Extras, like handles, cills, or even glass, can now be output separately on reports even in the absence of the Delivery Scheduling option.
- ▲ Photo Fronts are now stored in the database. This enables synchronization of Photo Front details for a Sales client.
- ▲ The Database name can now be 123-character long (as controlled by SQL Server). This was earlier limited to 8 characters.
- ▲ The ntext, text, and image data types in the SQL Server Database tables are replaced by nvarchar(max), varchar(max), and varbinary(max) respectively. This is because the later ones are future compatible, while the prior ones will not be supported in later versions of SQL Server.

Windowmaker **What's New** Windowmaker 5.9



Enhancements to Options

Scheduling

- ▲ All days of the week can now be set-up as Working Days, enabling the creation of Production Batches and Deliveries for Sunday.

Production Scheduling

- ▲ The Production schedule details can now be displayed on a 'Schedule Board'. The information displayed on the Board can be customised using different filters and colour coded for different parameters, e.g. status, job type, site, capacity utilisation, etc. The Schedule Board, a real time 'snapshot' of the Production Schedule, is a useful Management tool.

The screenshot shows the 'Schedule Board' window with a menu bar (File, View, Tools, Help) and various filters. The main area is divided into two panels for 'Monday 11/16/2009' and 'Tuesday 11/17/2009'. Each panel contains a table of production batches and their associated orders.

Batch	Site	DateTime	Finalis... Δ	Process...	Issued	Compl
PB04	Home	11/16/2009	<input type="checkbox"/>	<input type="checkbox"/>	<input type="checkbox"/>	<input type="checkbox"/>

Order	Job Type	Rep./Ar...	Status Δ	Account	Name
+ J0026	Domestic	Local	Acknow'd	AA01	Ardent Win.
+ J0020	Domestic	Local	Order OK	AA01	Ardent Win.
+ J0025	Domestic	Local	Production	AA01	Ardent Win.

Batch	Site	DateTime	Finalis... Δ	Process...	Issued
PB03	Home	11/17/2009	<input type="checkbox"/>	<input type="checkbox"/>	<input type="checkbox"/>

Order	Job T...	Rep./Ar...	Status	Account	Nam
+ J0028	Domestic	Local	Production	AA01	Arde
+ J0027	Domestic	Local	Order OK	AA01	Arde
+ J0021	Domestic	Local	Acknow'd	AA01	Arde

Georgian

- ▲ A 'Stuck On' Georgian item can now be mixed with 'Between Leaves' and 'Separates Glass' types of grids of matching thickness and colour.

Enhancements to Windowmaker Lite

- ▲ In Windowmaker Lite and Lite Plus, it is now possible to:
 - Create and progress a Production batch.
 - Run Crystal reports for a Production Batch.
- ▲ Set-up of a Saw Station and allocation of 'Normal' and 'Alternative' saws on Costheads is now available with the Parts Usage option.