

Windowmaker **What's New** **Windowmaker 5.961**



Contents

Pre-requisites for upgrading to Wm5.961	2
Database	2
General Enhancements	2
Quote/Job/Credit Job Setup Dialog.....	2
Edit Batch – Manually	3
Crystal Reports	3
Setup/User	5
Setup/Products	5
Setup/Catalogs.....	5
View/Purchases	5
New Options	6
Link to Glass Cutting Tables	6
Advanced Data Setup Tools	6
Enhancements to Options.....	6
Angled Heads	6
Arched Heads	6
Bays	7
Production/Delivery Scheduling	7

Windowmaker 5.961



Pre-requisites for upgrading to Wm5.961

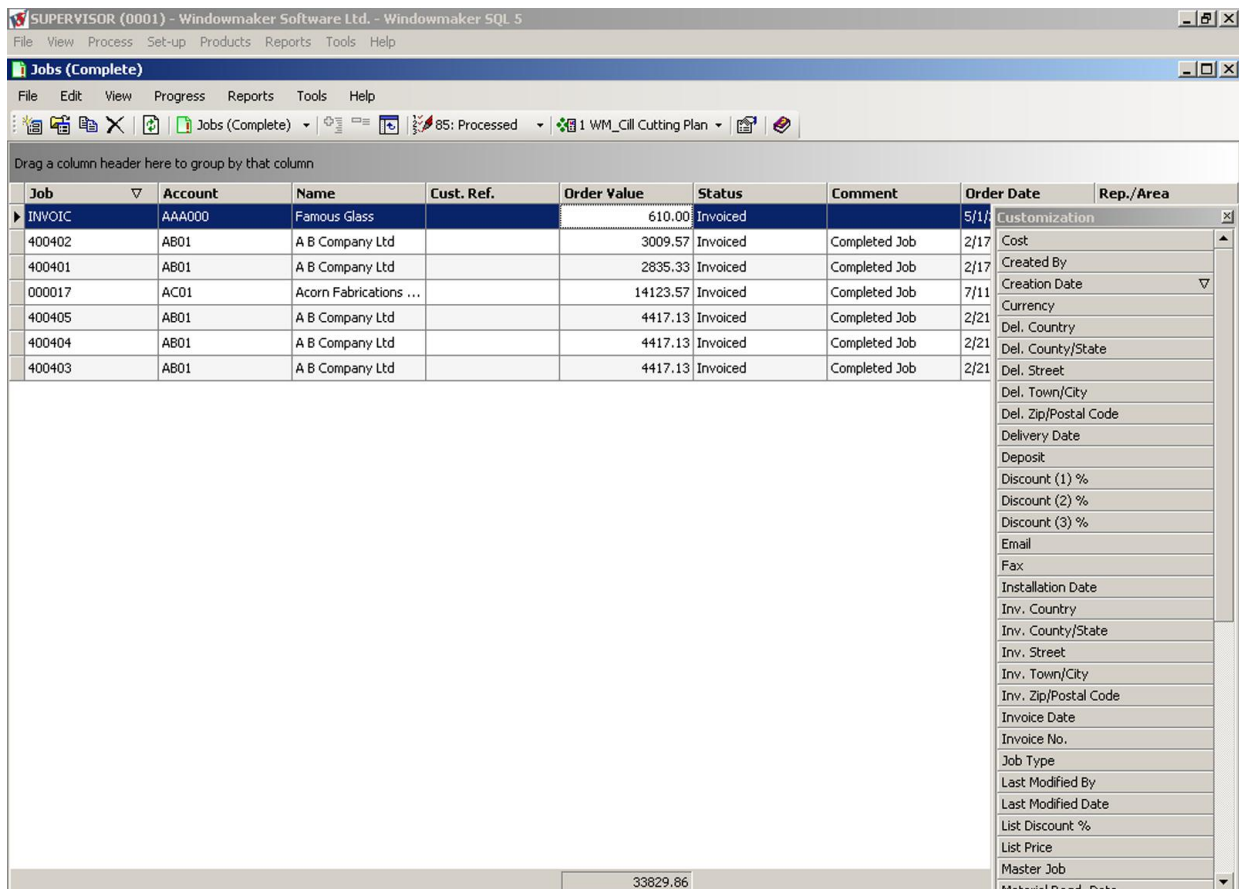
Database

- ▲ If you are upgrading from a version lower than Wm5.900 to Wm5.961 then
 - Refer Wm5.9 Upgrade Advisor for instructions on how to upgrade your existing product to Wm5.961.
 - Refer SQL Installation Guide for instructions on downloading and installing SQL Server 2008 R2 Express Edition.
 - Refer WM Installation Guide for instructions on downloading and installing Windowmaker 5.961.

General Enhancements

Quote/Job/Credit Job Setup Dialog

- ▲ This can now display many more columns related to a Quote/Job/Credit Job. This can help quickly and easily view more details of the Quote/Job/Credit Job without needing to open it.
- ▲ It will now be possible to create and save separate layouts (e.g. visible columns, grouping, sorting, summary etc.) for the Quote, Job and Credit Job Setup forms.



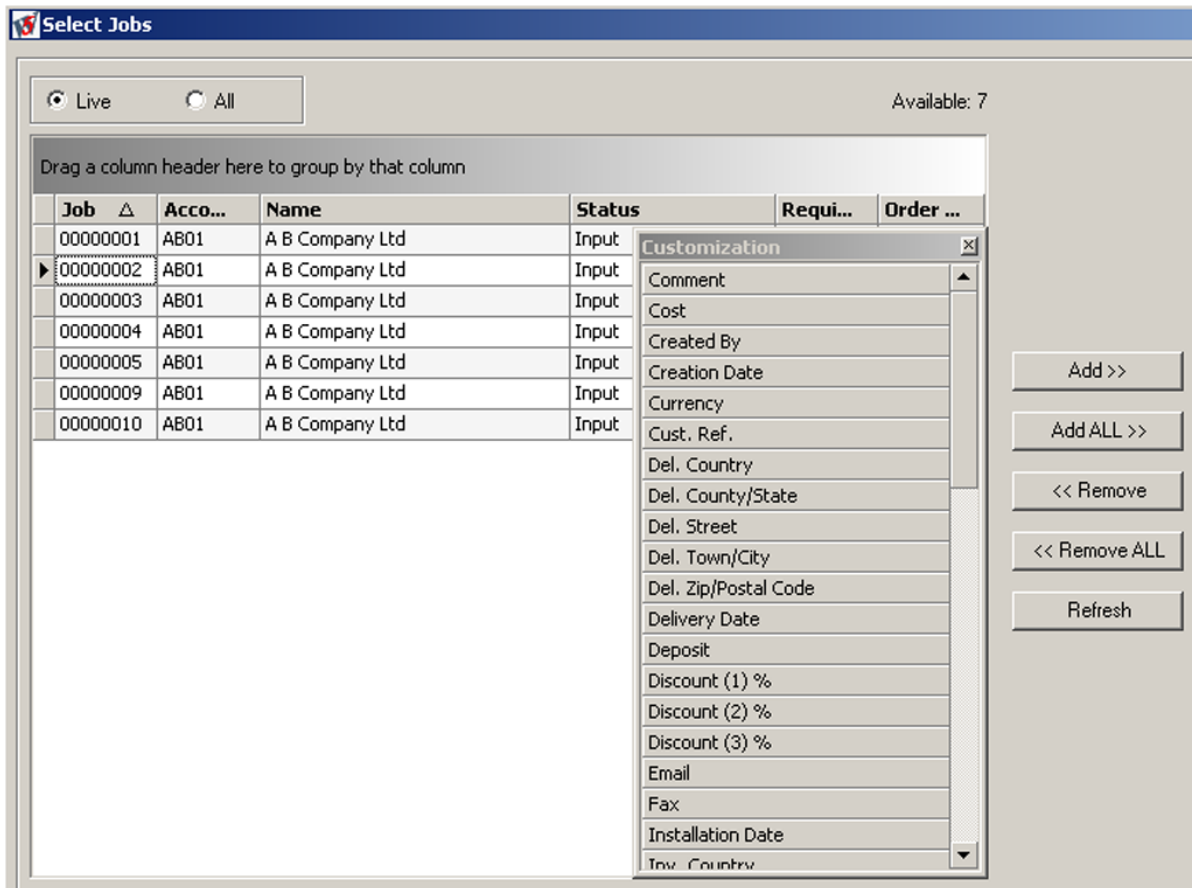
Windowmaker What's New

Windowmaker 5.961



Edit Batch – Manually

- ▲ This can now display many more columns related to a Quote/Job/Credit Job. These provide more criteria to select contents for a batch quickly and easily.
- ▲ It will now be possible to create and save separate layouts (e.g. visible columns, grouping, sorting etc.) for the Available Quote, Job and Credit Job lists.



Crystal Reports

- ▲ Following crystal reports now have a choice to output sizes rounded to 1/16th inches:
 - Production Document, Cutting List
 - Glass Usage, Glass Labels, Grid Cutting List
 - Item Detailed Costing, Item Costing Summary
 - Quotation, Order Acknowledgement, Invoice, Survey Sheet
 - Purchase Order
- ▲ The users creating their own reports can specify the appropriate value of the 'SizesFormat' parameter in the size related User Defined Functions to output sizes rounded to 1/16th inches. Refer Help file for the use of 'SizesFormat' parameter.
- ▲ The Crystal Reports that appeared as tab pages on the Quote/Job and Item input dialogs now work without any problems on computers running Windows 7 or Windows Vista operating systems. Such Crystal Reports are RPT filenames that begin with 'ORD_+' or 'ITM+'. These were displayed previously as tab pages using the Crystal Report Preview control which sometimes did not work correctly on these operating systems rendering this functionality unusable.

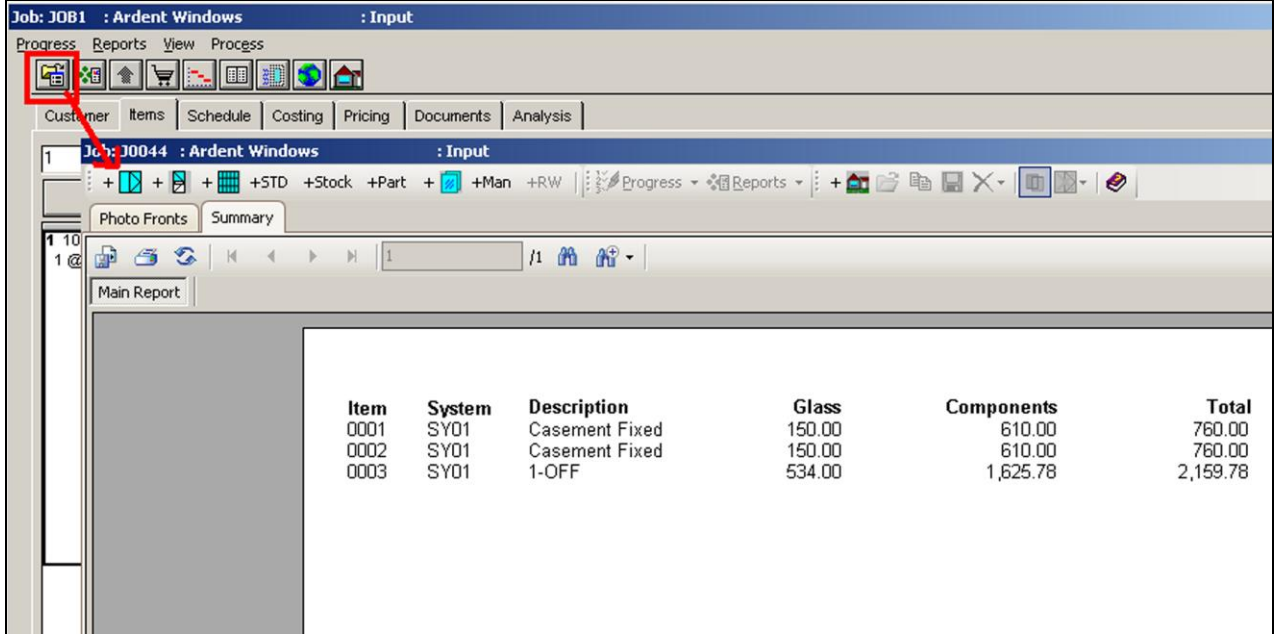
Windowmaker What's New

Windowmaker 5.961

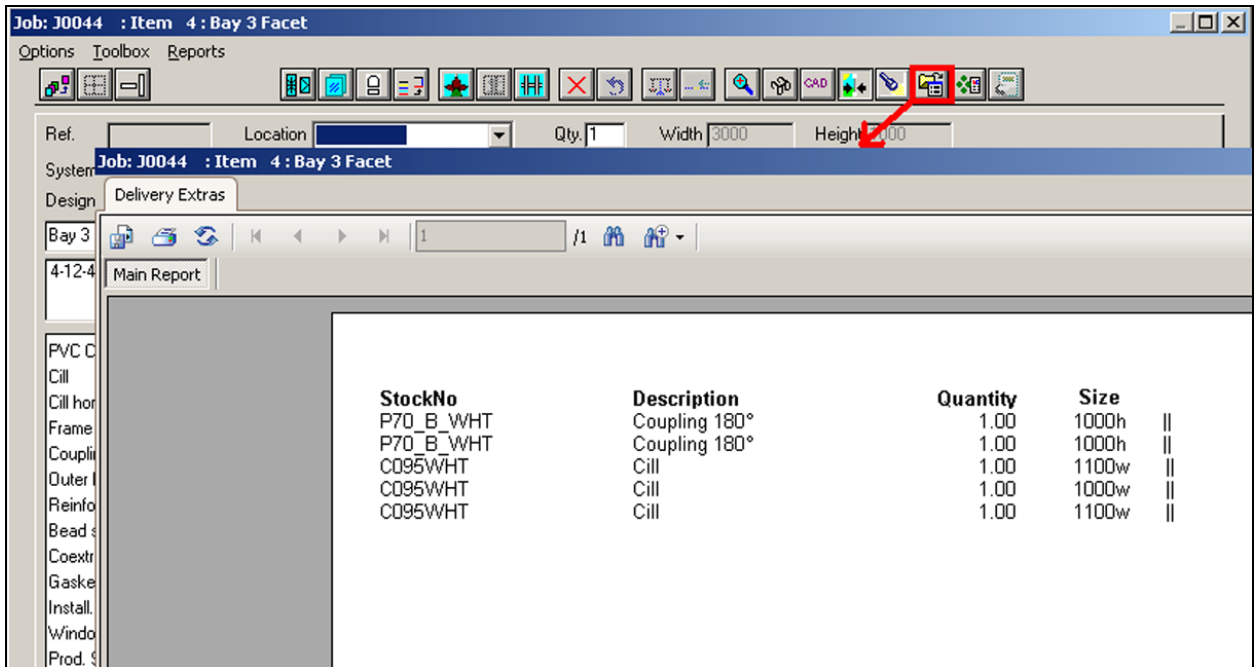


- ▲ For Quote/Job and Item, these reports can be accessed by opening a new dialog by clicking the 'Open' button on the toolbar of the respective input dialogs.

Job Notebook



Item Notebook



Windowmaker **What's New**

Windowmaker 5.961



Setup/User

User Setup is now redesigned for better aesthetics and ease of use. Features like grouping, sorting and filtering of Users are now possible.

The screenshot shows a window titled 'Users' with a menu bar (File, Edit, View, Tools, Help) and a toolbar. Below the toolbar is a 'Type' dropdown menu. The main area contains a table with columns: ID, Name, Already Logged In, and Area. The table is grouped into three sections: 'Type: Normal', 'Type: Sales Client', and 'Type: Tracking'.

ID	Name	Already Logged In	Area
Type: Normal			
1	SUPERVISOR	<input checked="" type="checkbox"/>	<All>
8	Manager	<input type="checkbox"/>	<All>
10	John	<input type="checkbox"/>	GY
17	Bob	<input checked="" type="checkbox"/>	<All>
20	David	<input type="checkbox"/>	East
121	Jimmy	<input type="checkbox"/>	North
131	Nicholas	<input type="checkbox"/>	South
201	Michael	<input type="checkbox"/>	Local
Type: Sales Client			
225	William	<input type="checkbox"/>	Local
226	Ron	<input type="checkbox"/>	North
227	Bill	<input checked="" type="checkbox"/>	<All>
240	Marc	<input type="checkbox"/>	East
241	Noel	<input type="checkbox"/>	West
Type: Tracking			
2	Toast	<input type="checkbox"/>	<All>
3	Bead Meas	<input checked="" type="checkbox"/>	<All>
4	track	<input type="checkbox"/>	<All>
5	Sash Fit	<input type="checkbox"/>	<All>
6	Frame Asb	<input type="checkbox"/>	<All>

Setup/Products

The facility to export and import of Catalog or selected Products within a Catalog, in data where 'modules' are migrated to database, is now generally available. This was earlier a checksum-controlled functionality.

This will enable you to:

- ▲ Export/Import selected Products (viz. Parts and Systems) between modules
- ▲ Export/Import selected Products or whole Catalog between test and live copies of datasets
- ▲ Export Catalog to send to WSL e.g. for trouble shooting when required
- ▲ Import Catalog that WSL has sent you with some modifications to resolve the reported problem

This could be a very handy tool for quick setup/correction/modification of data.

Setup/Catalogs

The name of the "Fabricator Disallows" module changes to "Fabricator Specifics." This is reflected in any user interface (e.g. menu, tool tip) or storage where it appears. This has been done with a view that this module should be used for anything that is fabricator specific (e.g. for accommodating a non-standard adjustment for calculating lengths of profiles).

View/Purchases

Purchase Setup is now redesigned for better aesthetics and ease of use. Features like grouping, sorting and filtering of Purchase records is now possible.

It will now also be possible to generate Crystal Report output for multiple Purchase records.

Windowmaker **What's New**

Windowmaker 5.961



The screenshot shows the 'Purchases' application window. The menu bar includes File, Edit, View, Progress, Reports, Tools, and Help. Below the menu bar is a toolbar with icons for Scheduled, Ordered, and WM_Glass Order Status. The main area contains a table with the following columns: Type, Reference, Supplier, Needed for, Discount %, Site, P.O. No., Status, Order By, and Due By. The table contains several rows of data, all with a 'Planned' status. A context menu is open over the 'Status' column, showing options: Sort Ascending, Sort Descending, Clear Sorting, Group By This Column, Group By Box, Column Chooser, Best Fit, Clear Filter, Filter Editor, and Best Fit (all columns).

Type	Reference	Supplier	Needed for	Discount %	Site	P.O. No.	Status	Order By	Due By
	30011	Double Glazing Suppliers		0.00	Home		Planned		2008
	30010	A & B Accessories Ltd.		0.00	Home		Planned		
	30012	Double Glazing Suppliers		0.00	Home		Planned		
	30013	Double Glazing Suppliers		0.00	Home		Planned		
	30015	Double Glazing Suppliers		0.00	Home		Planned		
	30014	Double Glazing Suppliers		0.00	Home		Planned		
	30018	Double Glazing Suppliers		0.00	Home		Planned		/200
	30019	Double Glazing Suppliers		0.00	Home		Planned		2010

New Options

Link to Glass Cutting Tables

A new Link to Powergrind Cutting Table is available. This is the same as the existing Powergrind link except that the output file name is '<Batch Number>.000' instead of hard coded filename 'CASFILE0.000'. This will enable you to generate and save link files for multiple batches.

Advanced Data Setup Tools

A new option is "Advanced Data Setup Tools." This will provide advanced facilities that help in quicker data set-up modifications.

Refer the following Windowmaker Help topics to get an idea about these facilities.

- ▲ Export/Import Parts
- ▲ Modify Features
- ▲ Move Records
- ▲ Export Options

Enhancements to Options

Angled Heads I/II

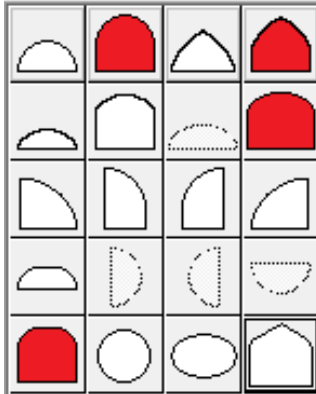
- ▲ For angled Items, when a transom or mullion is anywhere near to the point where a raked profile and a horizontal/vertical profile meet, the item will be successfully calculated. Earlier, in such cases the program generated the error: "Negative length(s) calculated."
- ▲ You can now place Transoms exactly at the rake node in all the angled Items except Octagon, Hexagon shapes and LeanTo conservatories.

Arched Heads

- ▲ You can now place Transoms exactly at the spring point in all the arched Items where the curve meets the vertical side smoothly, viz. Semicircular, Gothic, Arched Shape 60 and Basket shapes.

Windowmaker **What's New**

Windowmaker 5.961



Bays

- ▲ In Crystal Reports, the calculation of area for Flag Items is now made more accurate to consider the shorter facets. Earlier the area was calculated using the overall width and height of the flag item.

Note: For shaped items, the area will continue to be calculated as Overall width x height.

- ▲ The following User Defined Functions (UDFs) are now modified to allow printing Item area in Crystal Reports, as an answer to Option no. 10901:

User Defined Function (UDF)	Modified to
WMOptionDescription	Print description as 'Item Area' if required
WMItemOptionAnswer	Value of Item area
WMItemOptionAnswer1	
WMItemOption	Print description as well as value of Item Area
WMItemOption1	

- ▲ The standard Indian Quotation Crystal Report is modified to calculate Item area using the above UDFs. This will ensure that it uses an accurate area of Flag Items, to calculate and print more accurate price per unit area.

Production/Delivery Scheduling

On the Schedule Board, it is now possible to:

- ▲ Quickly and easily, schedule a Job or change the schedule of a Job using "drag and drop" feature (or "cut and paste" buttons).
- ▲ Drag and drop a Job from the list of unscheduled Jobs on a Production Batch or Delivery to schedule in it, if valid according to the scheduling logic.
- ▲ Drag and drop a scheduled Job or Item on a new Production Batch or Delivery to change its schedule.
- ▲ Move all contents of a particular Production Batch or Delivery to a new one.