

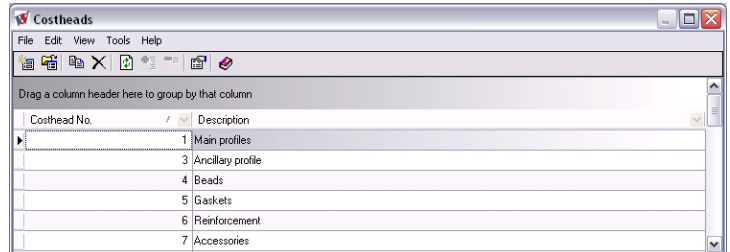
Windowmaker **What's New...** Windowmaker 5.6



New Windowmaker features

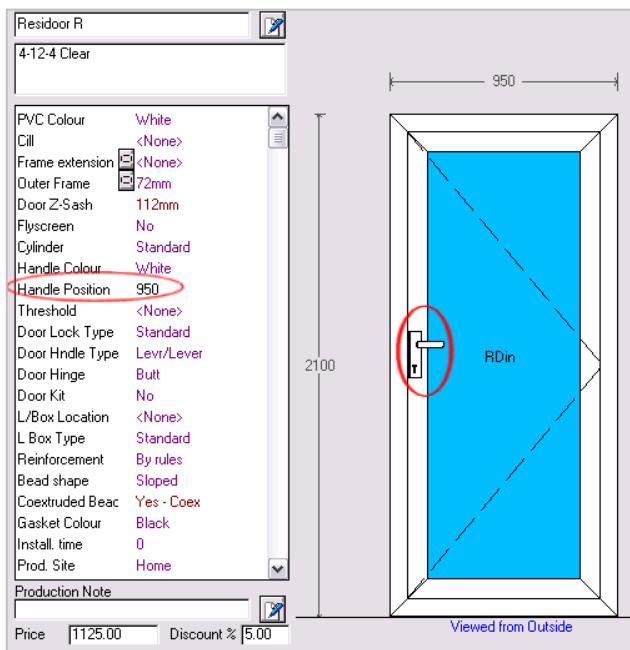
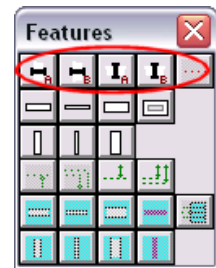
General

- ▲ Windowmaker features a new customisable dialogue with a user-friendly interface for key areas, such as:
 - Set-up | Costheads
 - View | Production Batches
 - View | Deliveries
 - Job History
- ▲ It includes the ability to:
 - Sort, filter and group records
 - Customise the layout (such as column resizing and repositing)
 - Select or search multiple records
- ▲ Purchase Orders can be created for Bought-to-Order components, without the Purchase Scheduling Option.



Order Entry

- ▲ A second Coupler Feature has now been provided.
 - It can be used when different 'Overall' level profiles are to be used at different positions in an item.
 - It can be applied to any or all four sides of an item to distinguish between the two types of horizontal or vertical profiles used in an item.
- ▲ Users without the Curtain Wall Option can input, but not store Curtain Wall items. If the requirement for such items is infrequent, this may be used to view calculated results (e.g. costing) on the screen.
- ▲ Positions of the Operation part and Fittings part graphics can now be specified during order entry via option answer. The Operation position can also be output in the Link to Working Centre.



Windowmaker **What's New...**

Windowmaker 5.6



Setup

- ▲ The number of costheads allowed has been now increased to 250.
- ▲ To improve the performance of Windowmaker when using Terminal Services, there is now an option to change the Windowmaker logo (for the splash screen and program background)
- ▲ Creating Glass Items is now easier, by the inclusion of a settings option in the Preferences / Input page (instead of setting up a new Glass System)

Database Access

- ▲ Multiple users can now simultaneously access the following:
 - Customer Records
 - Production Batches
 - Deliveries
 - Schedule page
- ▲ Option answers for a particular item are now stored in the Windowmaker database. This is helpful while transferring data from the Windowmaker database to any third party application.
- ▲ Customer Special Terms are now stored in the Windowmaker database. This will allow the user to:
 - Create, use and store unlimited special terms records.
 - Add special terms records directly into the database tables using external tools.
 - Replicate the special terms to the Windowmaker SQL Sales Client and thereby enabling the sales users to work offline.

Crystal Reports

- ▲ The 'Production Document' Report has been enhanced to include the following:
 - Trolley and Slot information for sub-batched production batches. (Only in Batch (_BAT) and Frame Production (_FP) type reports)
 - 'Production Note' and 'Design Description' entered for an item.
- ▲ New User Defined Functions (UDFs) have been introduced to:
 - Determine the 'Glass only frames' (i.e., glasses fixed directly to the overall level frames without sash profiles) of curtain wall items.
 - Print an Interleaved 2o5 barcode with checkdigit for a frame or sash.
- ▲ Following enhancements done to the Costing/Pricing Crystal reports:-
 - Batch totals will be printed on a separate page.
 - Records will be collated.
 - Date on the Header page will appear in short system format

Windowmaker Reports

- ▲ Windowmaker Reports can now display values for Weight, Discount and Discount2

Bows & Bays

- ▲ Bay Angles are now stored to two decimal places.

Timber

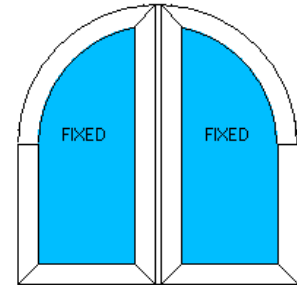
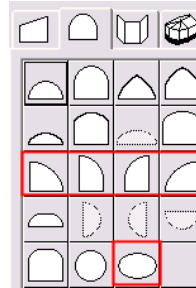
- ▲ Arched shaped wooden items can now be created.

Windowmaker **What's New...** Windowmaker 5.6



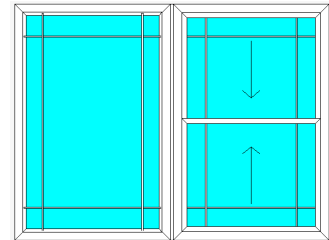
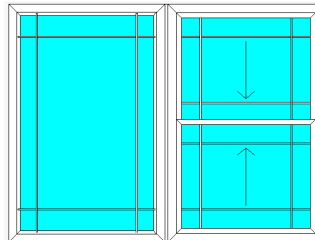
Arched Heads

- ▲ Windowmaker now supports the following new Arched Shapes:
 - Quarter arches
 - Landscape Oval.
- ▲ Vertical Couplers can now be applied to Arched Shape items.

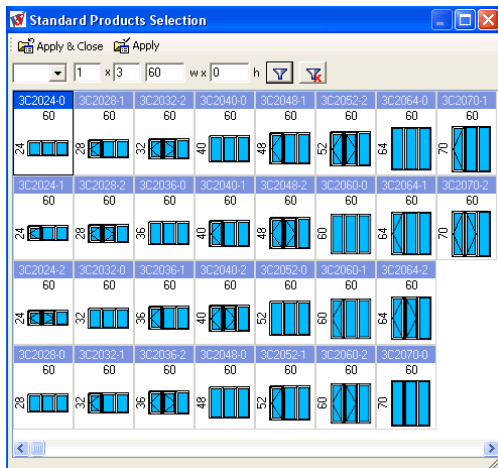


Georgian

- ▲ Items can now be created with 'Federation/Prairie' Grids
- ▲ Individual bars can then be deleted, added or moved.
- ▲ Georgian sub-bar (T-Georgian) functionality has now been extended to work with the 'Separates Glass' Grid Type. For companies that supply "real" Georgian, this means that the Georgian facility can now be used instead of individual transoms & mullions.



Standard Products



- ▲ Standard Products are now displayed in a wall chart, and filtered based on criteria specified by you.

Curtain Wall

- ▲ Curtain Wall items can now be created in Windowmaker.
- ▲ This includes the facility to distinguish Systems specific to Curtain Wall items.
- ▲ The Ladder Number is displayed on each frame.
- ▲ The following Crystal reports are also available:
 - 'Production Document' to print details of Curtain Wall items.
 - 'Ladders Document' to print the details of each ladder in a Curtain Wall item.
- ▲ Optimised Costing can be run for a batch containing Curtain Wall items, helping determine the cost of non-optimised parts.

Windowmaker **What's New...**

Windowmaker 5.6



Optimised Costing/Pricing

- ▲ Optimised Costing can now be run for a batch containing Curtain Wall items, helping determine the cost of non-optimised parts.

XML Glass Order

- ▲ 'XML' has now been provided as a Purchase Order Format for Glazing Suppliers.
- ▲ Glass Shape Codes can now be output in the XML Purchase Order in A+W, PMC or Windowmaker format.
- ▲ The Purchase Order Document for glass is now generated automatically when the Purchase record is set to status 'Ordered'.
- ▲ The following fields have now been added to the Glass Order XML file:
 - ItemLocation Location of item selected on the Item / Solution page
 - CustomerName Customer name (as entered in the job)
 - ItemReference2 Displays the batch name

Advanced Production Scheduling

- ▲ A new 'Rescheduling' facility has been introduced. This functionality is useful when the production schedule is to be re-planned to consider the loading capacity of the controlling bottleneck and delivery dates. Features include the following:
 - Jobs can now be re-scheduled between two production dates.
 - The item quantity can also be split scheduled.
 - Job History page displays the job re-scheduling information.
 - Details of jobs that were skipped during rescheduling are displayed.
 - Rescheduling can be aborted anytime during the process.
- ▲ The production schedule of a job or item can now be changed from View | Production Batches or View | Deliveries.

The 'Automatic Production Scheduling' dialog box contains the following fields and options:

- Include Scheduled Jobs between Production Dates:** Start (16/03/2007), End (21/03/2007)
- Include Unscheduled Jobs:** At Status (4: Acknow'd), Skip Internal Orders
- Movement:** Pull Production towards (16/03/2007), Push Production towards (21/03/2007)
- Maximum Load:** Controlling Bottleneck (1851: Sawing), Loading Capacity (80 %)
- Time Lag to Delivery:** 2 days
- Buttons: OK, Cancel

The 'Change Schedule' dialog box contains the following fields and options:

- Production:** 1/0206A, 02/06/2008, 0 | 0
- Delivery:** 112, 03/06/2008, Friday route, 0 | 172, New
- Buttons: OK, Cancel

Advanced Delivery Scheduling

- ▲ The delivery schedule of a job or item can now be changed from View / Production Batches or View / Deliveries

Windowmaker **What's New...**

Windowmaker 5.6



Tracking

- ▲ Tracking Users can now automatically import tracking records created at a station using Import – Tracking functionality.
- ▲ Tracking has been enhanced to sort and/or prioritise frame/sash/glass processed at a Station according to the criteria specified on the Set-up | Stations | Tracking dialog.

A screenshot of the 'Tracking' dialog box. It is divided into two main sections. The left section is titled 'Default Sequence Criteria' and contains a vertical list of 'Sort on' criteria: 'Arrival', 'then Job OK', 'then Item OK', and 'then <None>'. Each criterion is in a dropdown menu. The right section is titled 'Minimum statuses for priority progression' and is further divided into 'Job' and 'Item QtyNo.'. Under 'Job', there are three rows: 'Frame' with '20: Production', 'Sash' with '30: Weld&Clean', and 'Glass' with an empty dropdown. Under 'Item QtyNo.', there are two rows: '30: Weld&Clean' and '30: Weld&Clean', each with its own dropdown menu.

- ▲ The Work Instruction dialog box, on the Tracking Screen now highlights the sash that is currently being tracked for easy reference.
- ▲ 'Tracking functionality now offers a choice to restrict the number of frames/sashes that can be processed at a particular Station. This is to ensure that processing at the current station does not exceed the holding capacity of the next station.

Links to Working Centre

- ▲ Working Centre transaction details can now be stored in XML format. This means that the information can be easily accessed from and exported to third party software if required.
- ▲ 'Link to Working Centre' now supports Ciman Working Centre, providing cutting and machining process data.

New Windowmaker Options

Windload

- ▲ A new 'Windload' functionality has been introduced that helps to find out whether the profiles used are rigid enough to sustain possible deflections under wind pressure.
- ▲ You can set up rules with a condition to test on the specified Elx range for profiles used in the Curtain Wall items

Purchase Ordering

- ▲ A new 'Purchase Ordering' option has been introduced, that allows:
 - Purchase Order status to be progressed.
 - Purchase Order numbers to be allocated.
 - Purchase Order Documents to be automatically printed when the order is updated to status 'Ordered'.

Windowmaker **What's New...** Windowmaker 5.6



Order Tracking for Pocket PC

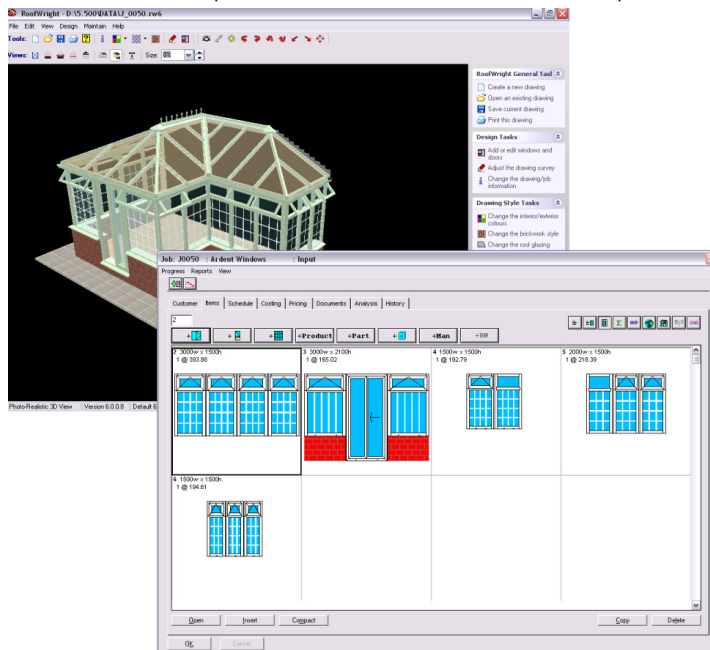
- ▲ The new 'Order Tracking for the Pocket PC' option is now available for fabricators to provide their resellers with a facility to view the status of their order(s) online, using a Microsoft Pocket PC (PDA).
- ▲ Windowmaker 'Order Tracking' can help fabricators to improve the customer service they offer, by providing instant access to key order data. In addition, it saves the time for fabricators spent on answering a reseller's inquiries regarding the status of order(s).
- ▲ A reseller can independently and regularly track the status of order(s) from virtually anywhere, over the Internet. This helps the reseller to ensure that their orders are fulfilled on time.
- ▲ Order Tracking for the Pocket PC is only available as an option for Windowmaker SQL.



Reference	Status	Delivery date
ARN01	Input	8/8/05
JEE01	Production	3/14/05
MK124	Input	12/31/04
MK123	Input	12/30/08
ANNV02	Input	12/26/08
ARN02	Input	12/24/08
ARN03	Input	12/23/08
ANNV01	Input	12/23/08
Mike01	Input	12/20/08
Mike02	Input	12/16/08

Link to RoofWright for Conservatories

- ▲ RoofWright software can now be launched from within Windowmaker. Once items are created, the facet details can be imported back into Windowmaker for processing.



Link to Simply Accounting

- ▲ 'Link to Sales' option now includes support for Simply Accounting, allowing transferring of invoice details from Windowmaker to Simply Accounting.