



## Contents

**Pre-requisites for Upgrading** ..... 1

**General Enhancements** ..... 2

    Costheads ..... 2

    View Data History ..... 2

    Design Class ..... 3

    Products: Active/Inactive ..... 3

**Enhancements to Options**..... 4

    Entrance Doors ..... 4

    Advanced Data Management Tools ..... 5

        Glazing ..... 5

        Move Records ..... 5

    Link to Saw ..... 5

### Pre-requisites for Upgrading

Please refer to the [Release Notes](#), which document important behaviour changes, which are introduced in this version. These must be read in order to understand how they might affect your installation & upgrade process.

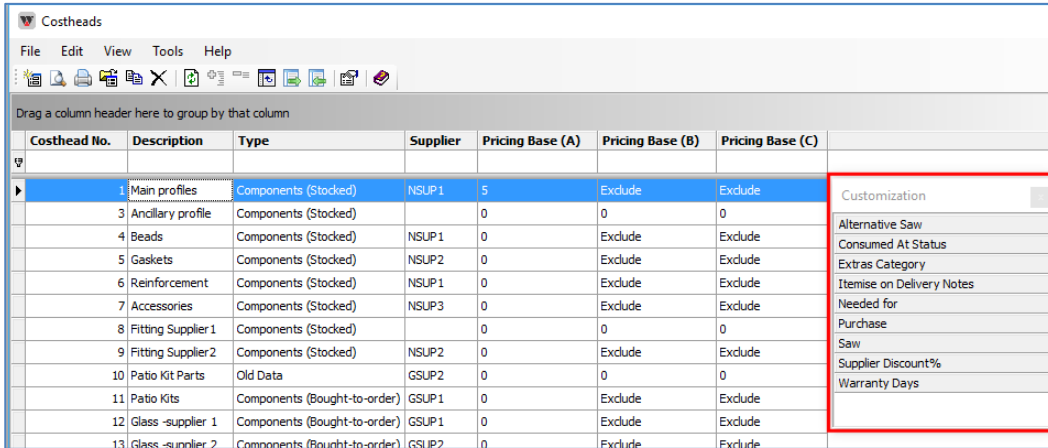
When upgrading please also refer to below documents for changes since your current version:

<b>If your current version is</b>	<b>What's New</b>	<b>Release Notes</b>
Windowmaker 2018 (v7.x)	<a href="http://www.windowmaker.com/EN/PDF/Windowmaker%202018%20(v7.x)%20Whats%20New.pdf">www.windowmaker.com/EN/PDF/Windowmaker%202018%20(v7.x)%20Whats%20New.pdf</a>	<a href="http://www.windowmaker.com/EN/PDF/Windowmaker%202018%20(v7.x)%20Release%20Notes.pdf">www.windowmaker.com/EN/PDF/Windowmaker%202018%20(v7.x)%20Release%20Notes.pdf</a>
Windowmaker 2012 (v6.x)	<a href="http://www.windowmaker.com/EN/PDF/Windowmaker%202012%20(v6.x)%20Whats%20New.pdf">www.windowmaker.com/EN/PDF/Windowmaker%202012%20(v6.x)%20Whats%20New.pdf</a>	<a href="http://www.windowmaker.com/EN/PDF/Windowmaker%202012%20(v6.x)%20Release%20Notes.pdf">www.windowmaker.com/EN/PDF/Windowmaker%202012%20(v6.x)%20Release%20Notes.pdf</a>
Windowmaker 5 (v5.x)	<a href="http://www.windowmaker.com/EN/WhatsNew.aspx">www.windowmaker.com/EN/WhatsNew.aspx</a>	

### General Enhancements

#### Costheads

Costheads set-up now shows many more columns. Columns can be removed or added from the Column Chooser.



Costhead No.	Description	Type	Supplier	Pricing Base (A)	Pricing Base (B)	Pricing Base (C)	
1	Main profiles	Components (Stocked)	NSUP 1	5	Exclude	Exclude	Customization
3	Ancillary profile	Components (Stocked)		0	0	0	Alternative Saw
4	Beads	Components (Stocked)	NSUP 1	0	Exclude	Exclude	Consumed At Status
5	Gaskets	Components (Stocked)	NSUP2	0	Exclude	Exclude	Extras Category
6	Reinforcement	Components (Stocked)	NSUP 1	0	Exclude	Exclude	Itemise on Delivery Notes
7	Accessories	Components (Stocked)	NSUP3	0	Exclude	Exclude	Needed for
8	Fitting Supplier1	Components (Stocked)		0	0	0	Purchase
9	Fitting Supplier2	Components (Stocked)	NSUP2	0	Exclude	Exclude	Saw
10	Patio Kit Parts	Old Data	GSUP2	0	0	0	Supplier Discount%
11	Patio Kits	Components (Bought-to-order)	GSUP 1	0	Exclude	Exclude	Warranty Days
12	Glass -supplier 1	Components (Bought-to-order)	GSUP 1	0	Exclude	Exclude	
13	Glass -supplier 2	Components (Bought-to-order)	GSUP 2	0	Exclude	Exclude	

#### View Data History

History of the data and program can now be maintained in History.txt file. This can be accessed from Administration → Tools → View Data History, by users with Senior Manager 'rights'. You may record changes such as:

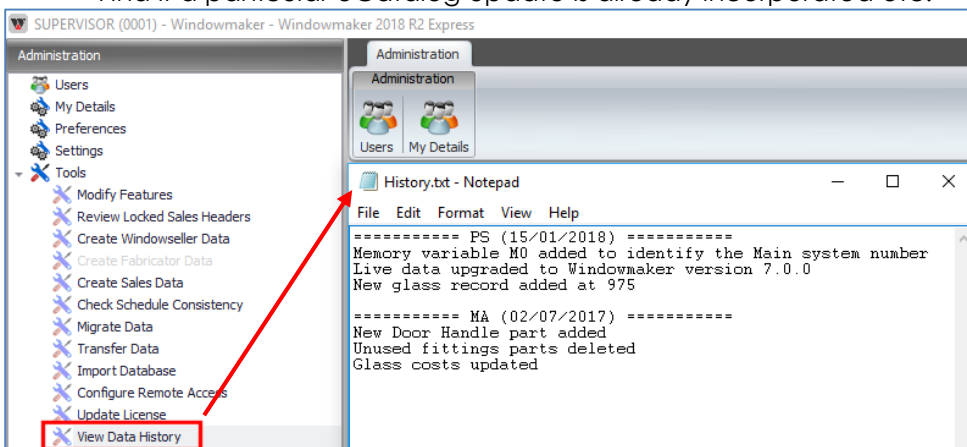
1. Upgrading to a new Windowmaker version
2. Upgrading to a new eCatalog version
3. Applying a new LIC file
4. Updating Cost/Price/Mark-up
5. Adding profiles/hardware/glass
6. Making any other changes like fixing issues

It is recommended that:

- If any changes are made at your end, it is recorded in the History
- The history includes date and the initials/name of person making the changes
- History is recorded in reverse chronology (latest changes at the top)

Maintaining proper history can help:

- Troubleshoot problems
- Find who made certain changes, especially when there is change of staff
- Check when costs (glass/profile/fittings) were last updated
- Find if a particular eCatalog update is already incorporated etc.



### Design Class

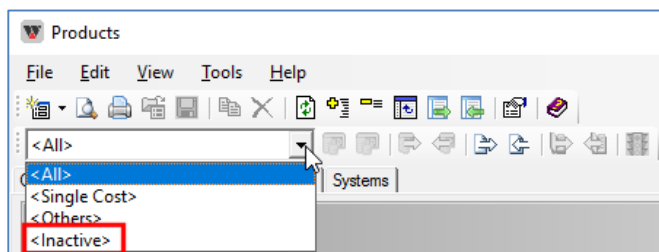
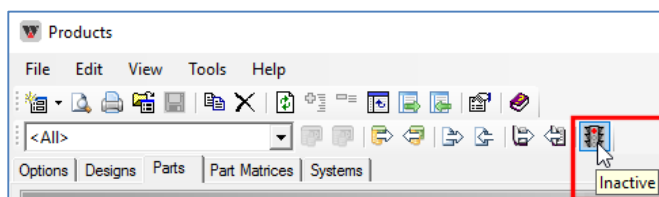
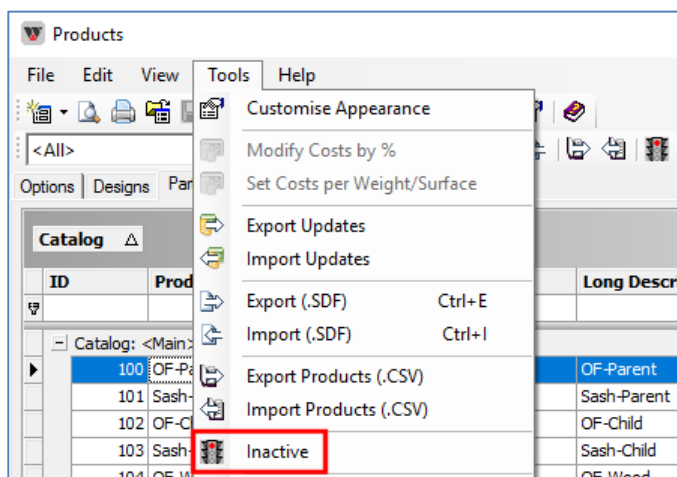
The program now allows 20 characters for Design Class description instead of 10.

### Products: Active/Inactive

Windowmaker now allows to set products as Inactive. This makes data maintenance easier as the normal views/lists do not show inactive products. Such products are shown in '<Inactive>' view, and can be set back to Active. Following types of products can be set to Inactive:

1. Parts
2. Systems
3. Part Matrices
4. Glass
5. Designs
6. Door Styles
7. Door Slabs
8. Glass Inserts

- ▲ Only Active products are available for selection during order entry. This makes order entry faster.
- ▲ Export/Import Updates only include Active products. Hence updating costs using this tool becomes much easier.



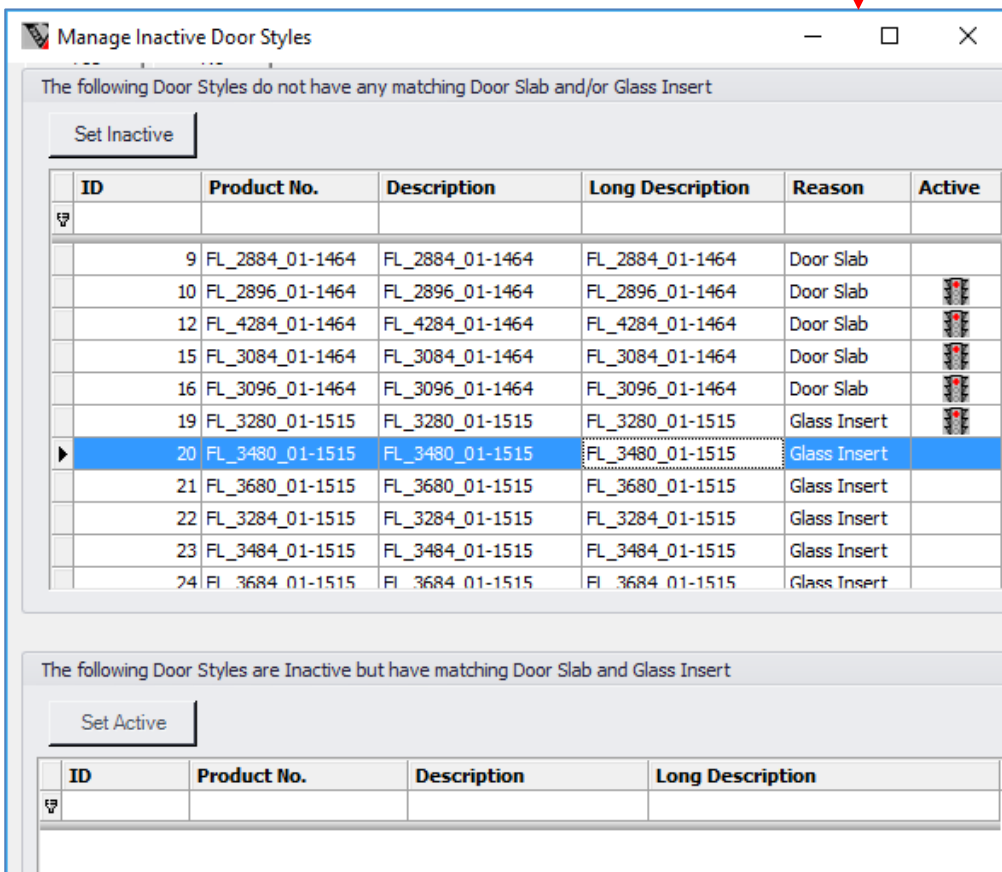
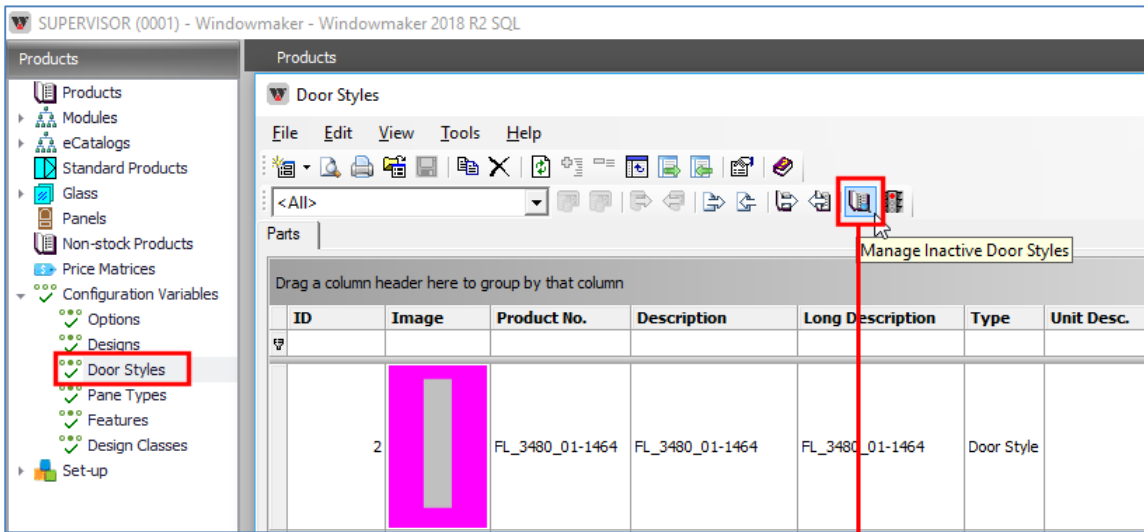
**Note:** This facility is not available in Windowmaker Lite.

### Enhancements to Options

#### Entrance Doors

You can now flag Door Styles, Door Slabs and Glass inserts as Inactive. All products which you are not selling can be set as Inactive. Such products will not be available for selection during order entry. This makes order entry very fast as only valid products are available for selection.

A tool 'Manage Inactive Door Styles' is now available. Using this all Door Styles which do not have matching Door Slabs and/or Glass Inserts can be set as Inactive.

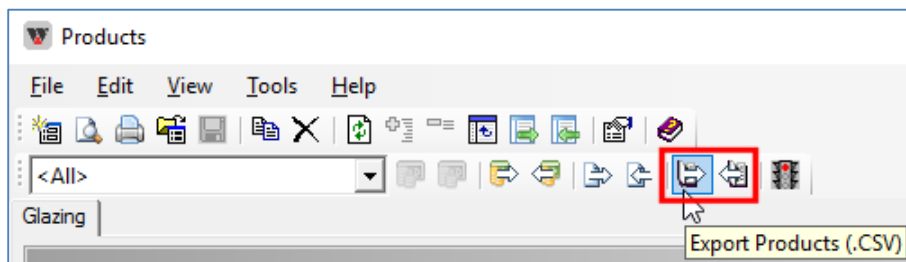


### Advanced Data Management Tools

#### Glazing

You can now use Export/Import Products (.CSV). This makes it easy to:

- ▲ Review/update/add multiple glazing records in one go
- ▲ Transfer new/updated records to another data



#### Move Records

It is now possible to move Part Matrices using Administration → Tools → Move Records. All associated rules are updated automatically.

#### Link to Saw

Windowmaker now links to Kaban HB2010 double mitre saw.