



Contents

- Pre-requisites for Upgrading** 1
- General Enhancements** 2
 - Options 2
 - Errors/Warnings 3
- Enhancements to Options**..... 4
 - Customer Special Terms 4
 - Entrance Doors 5
 - Tracking 6
 - Link to Saw 6
 - Link to Working Centre 6
 - Link to Welder..... 6

Pre-requisites for Upgrading

Please refer to the [Release Notes](#), which document important behaviour changes, which are introduced in this version. These must be read in order to understand how they might affect your installation & upgrade process.

When upgrading please also refer to below documents for changes since your current version:

If your current version is	What's New	Release Notes
Windowmaker 2018 (v7.x)	www.windowmaker.com/EN/PDF/Windowmaker%202018%20(v7.x)%20What's%20New.pdf	www.windowmaker.com/EN/PDF/Windowmaker%202018%20(v7.x)%20Release%20Notes.pdf
Windowmaker 2012 (v6.x)	www.windowmaker.com/EN/PDF/Windowmaker%202012%20(v6.x)%20What's%20New.pdf	www.windowmaker.com/EN/PDF/Windowmaker%202012%20(v6.x)%20Release%20Notes.pdf
Windowmaker 5 (v5.x)	www.windowmaker.com/EN/PDF/What%27s%20New%20-%20Windowmaker%205.x.pdf	

Windowmaker 2018 R3.9

General Enhancements

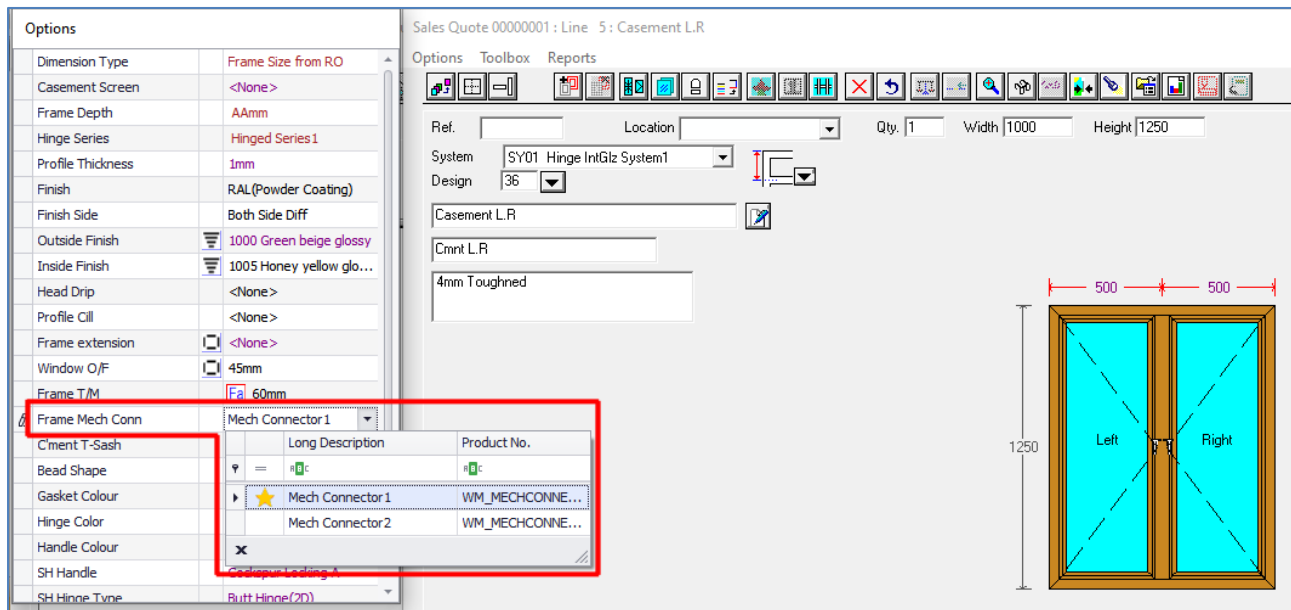
Options

- It is now possible to set up 5000 options.
- Part Filter type Options are now available for Unit parts.

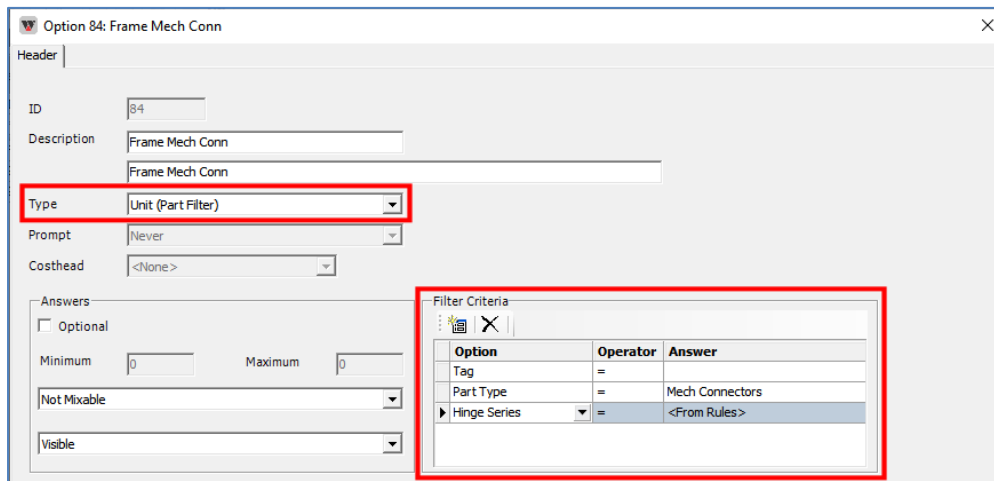
The answers for Part Filter type Options are real parts. Program determines the answers using the 'filter criteria' defined, which are in the form of other Options. The default answer can be specified, which is optional. All parts matching these criteria, across eCatalogs, are considered as the answers of that option.

The benefits of having Part Filter options are:

1. Allows real parts to be answers to options. This will make data setup easier. Previously answers were setup as non-real, then used in the rules to calculate the real parts.
2. Allows answers to be across eCatalogs.
3. Allows to easily merge eCatalogs from multiple Fittings suppliers.
4. Allows same answer to be shared across two or more different Options.
5. Eliminates the need of maintaining/modifying Option disallows. Depending on the matching criteria only the relevant answers will be available for selection.



The screenshot shows the 'Options' window in Windowmaker. The left pane lists various options such as 'Dimension Type', 'Casement Screen', 'Frame Depth', etc. The 'Frame Mech Conn' option is selected and highlighted with a red box. A pop-up window shows the details for 'Mech Connector1', including a list of 'Long Description' and 'Product No.' entries. To the right, a technical drawing of a window frame is shown with dimensions: 500mm width for each pane, 1250mm height, and 4mm toughened glass. The window is labeled 'Left' and 'Right'.



The screenshot shows the configuration dialog for 'Option 84: Frame Mech Conn'. The 'Type' is set to 'Unit (Part Filter)'. The 'Filter Criteria' section is highlighted with a red box and contains the following table:

Option	Operator	Answer
Tag	=	
Part Type	=	Mech Connectors
Hinge Series	=	<From Rules>

PART 4471: Mech Connector1

Header | Graphics

Catalog: Profile System Data
ID: 4471

Product No.: WM_MECHCONNECT1
Product Type: Unit
Description: Mech Connector1
Weight: 0.0
Pack Quantity: 1

Filter Criteria

Options	Operator	Answers
Tag	=	
Part Type	=	Mech Connectors
Hinge Series	=	Hinged Series1

Errors/Warnings

If a part with cost 'Not Specified' is used in a sales line the program can now generate an error, instead of a warning, when specified in Application Settings.

Application Settings

Sales

- Pricing
- Tax
- Sales Header Status
- Elevations
- Sales Line
- Link To CAD
- Settings
- Glass Shape Mark-ups

Survey

Manufacturing

Delivery

Installation

Administration

- Settings
- Document Numbering
- Schedule

Re-calculate for Equal Glass

Tolerances for Sales Line Size

Max. Round up: 0
Max. Round down: 0

Plan Dimensions

Surveyed from

Inside
 Outside
 Outside Width, Inside Projection

Input Method: Bay Projections
Depth Offset: 65

Options

User Interface: New

Calculate Products with cost 'Not Specified' as

Warning
 Error

Options

T-Joins	Welded
Coextruded Bead	Yes
Frame Depth	70mm
Hinged Series	70mm 10 Rustique(Int)
Profile Shape	system 10
Colour	White
Head Drip	<None>
Profile Cill	<None>
Frame extension	<input type="checkbox"/> <None>
Window O/F	<input checked="" type="checkbox"/> 56mm
Frame T/M	70mm
Ciment T-Sash	76mm Internally Bead
Bead Shape	Sloped
Fittings Supplier	Generic Fittings
Handle Colour	White
SH Handle	Cockspur Locking A
SH Hinge Type	Friction Hinge
Hinge Material	SS Hinge

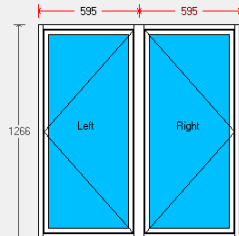
Sales Quote Q0053 : Line 1:

Options | Toolbox | Reports

Ref. Location Qty. 1 Width 1190 Height 1266

System: VU01 70mm Rustique 10 Int Glaze
Design: 26

4-16-4 Clear



Production Note

Price: 279.89 Discount %: 0.00

Situation | Solution

Errors

Description	Where
Cost of WM_CasementWedge not specified. Assuming Cost = 0.	S.A1



Enhancements to Options

Customer Special Terms

When a Quote Price is overridden with a negotiated price:

- o It is now optional to apply resultant 'discount' to Pricing Extras. This is helpful in cases where discounts are given only to materials, and not to pricing extras (e.g. Installation Charges, Transportation, Lead & Lift).
- o The Sales Line prices, which are calculated proportionately, may not add up to the entered value. However, now the Nett is kept as close as possible to the entered value by slightly adjusting the discount % for one of the systems. This is helpful especially for large projects having large quantity of windows and doors.

Before overriding price

Special Terms

Terms: Cost Plus Price List Optimised Cost Plus

Order Type: 8 : Com Contr1

Apply discount to Pricing Extras
 Apply pro-rata to Sales Lines

System	Code	Description	Gross	Discount %	Nett	Tax (A) %	Nett after Tax
AL01	AC01	Alupure Casement	60056.00	0.00	60056.00	12.50	67563.00
AL02	AS01	Alupure Slider	42804.00	0.00	42804.00	12.50	48154.50
VU01	PC01	70mm Rustique 10 Int	75985.84	0.00	75985.84	12.50	85484.07
VU02	PC01	70mm Rustique 10 Ext	31180.00	0.00	31180.00	12.50	35077.50
Base Total			210025.84	0.00	210025.84		236279.07
EX01	EX01	Pricing - Extras	878.48	0.00	878.48	12.50	988.29
Total			210904.32	0.00	210904.32		237267.36

After overriding price - Nett (negotiated) price entered as 188000

Special Terms

Terms: Cost Plus Price List Optimised Cost Plus

Order Type: 8 : Com Contr1

Apply discount to Pricing Extras
 Apply pro-rata to Sales Lines

System	Code	Description	Gross	Discount %	Nett	Tax (A) %	Nett after Tax
AL01	AC01	Alupure Casement	60056.00	10.89	53515.90	12.50	60205.39
AL02	AS01	Alupure Slider	42804.00	10.91	38134.08	12.50	42900.84
VU01	PC01	70mm Rustique 10 Int	75985.84	10.91	67695.78	12.50	76157.75
VU02	PC01	70mm Rustique 10 Ext	31180.00	10.91	27778.26	12.50	31250.54
Base Total			210025.84	10.90	187124.02		210514.52
EX01	EX01	Pricing - Extras	878.48	0.00	878.48	12.50	988.29
Total			210904.32	10.86	188002.51		211502.81

It is now possible to set-up Option answer defaults for each User, like that for a customer.

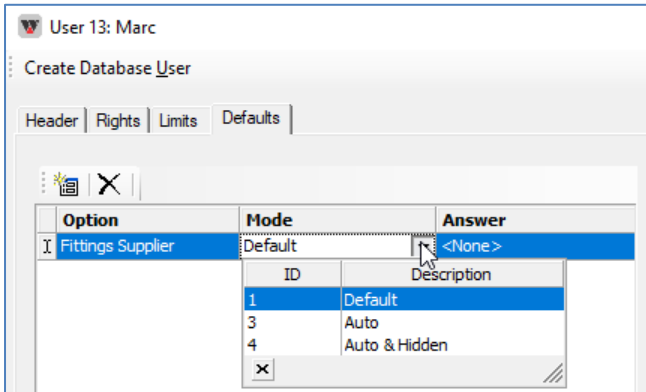
When a Sales Line is created, the behaviour based on option answer Mode specified on a User record is as given below:

Mode	Behaviour
Default	The specified answer is used as the default instead of the system default. It will be visible during order entry and can be changed to a different answer.
Auto	The specified answer is automatically selected. It cannot be changed to a different answer but will be visible during order entry and reports.
Auto and Hidden	Same as for Auto, but also prevents listing the Option at order entry & reports.

The order of precedence for option-answers when creating a Sales Line would be:
User defaults (highest) → Customer defaults → System Rules (lowest).

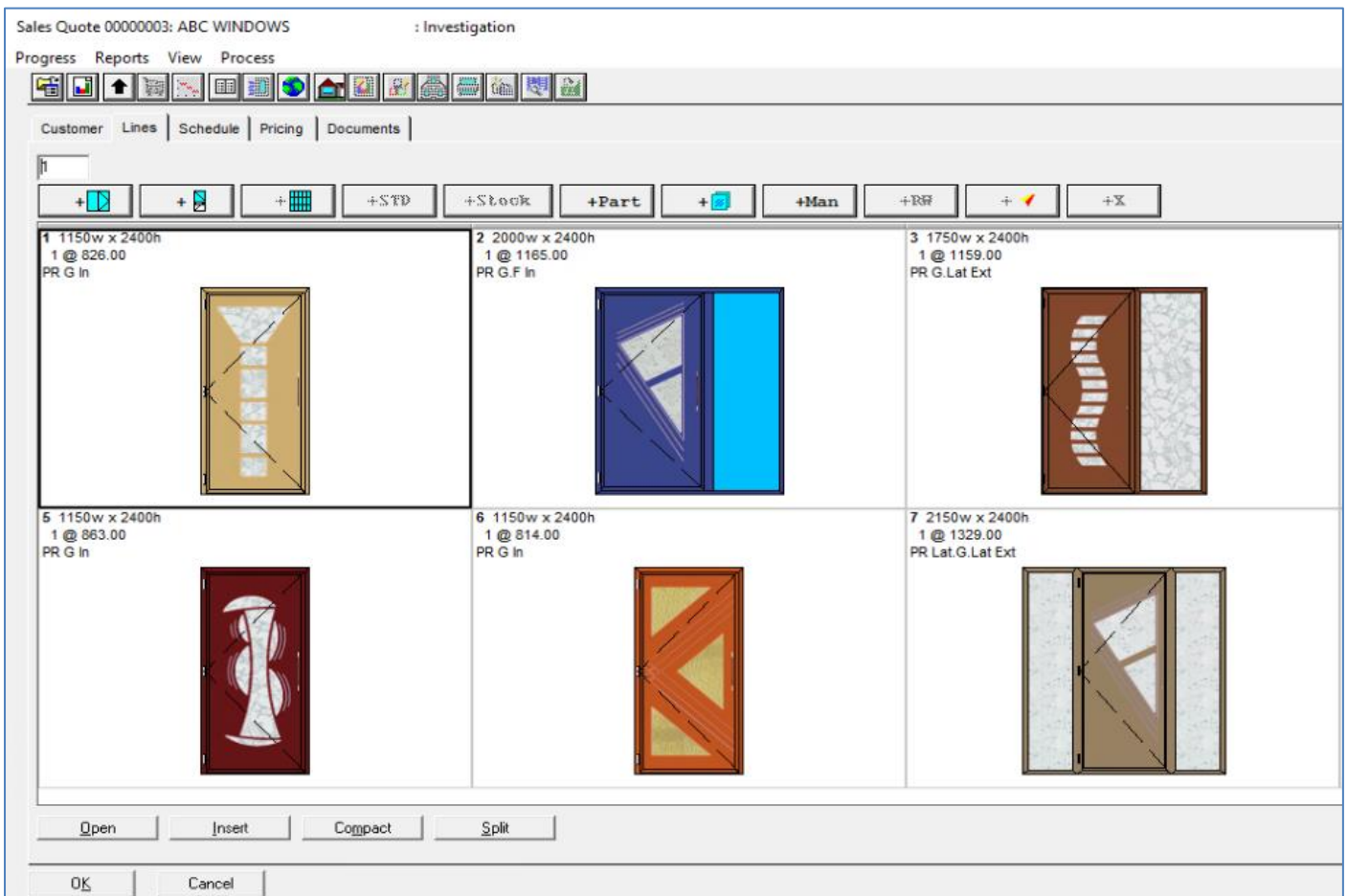
However, if system setting is 'Auto', it always takes precedence. In such a case, if a conflicting Auto answer results from Customer and User settings, the program will give an error.

This could be useful to make Options/Answers auto or hidden for Sales Users and Dealer Users, making order entry faster and simpler e.g. Hardware brand, which may be decided at the time of production based on stock availability.



Entrance Doors

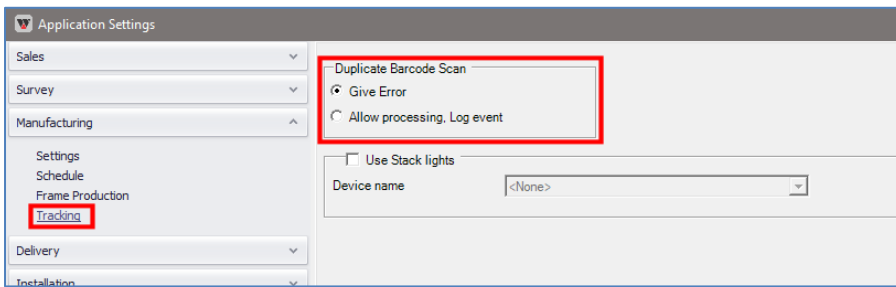
Windowmaker now handles entrance doors with numerous cut-outs with various sizes and shapes.



Tracking

Application Settings now allow to choose the behaviour when the same barcode is scanned more than once.

Settings	Behaviour
Give error	Gives error message "This Frame/Sash/Glass is already processed at this station".
Allow processing, Log event	Allows processing and maintains a count of number of times it has been scanned. This could be useful to process at a station without any interaction with the screen e.g. when a barcode is scanned again inadvertently.



Link to Saw

- Windowmaker can now link to
- Rapid Optima E2000 saw
 - Pertici Scarabeo 55 saw

Link to Working Centre

Windowmaker can now link to Sturtz V209 working centre.

Link to Welder

- Windowmaker can now link to
- Rotox 8-head welder
 - Hollinger 6-head welder
 - Urban 6100 8-head welder
 - Sturtz 8-head welder

Windowmaker's link to welders can now include instructions to weld 'overall' level parts. (E.g. Cavity Closures, Frame extensions)

